

5-2019

The Multifactorial Nature of Beak and Skull Shape Evolution in Parrots and Cockatoos (Psittaciformes)

Jen A. Bright
University of South Florida, jabright@usf.edu

Jesús Marugán-Lobón
Unidad de Paleontología

Emily J. Rayfield
University of Bristol

Samuel N. Cobb
University of York

Follow this and additional works at: https://digitalcommons.usf.edu/geo_facpub



Part of the [Earth Sciences Commons](#)

Scholar Commons Citation

Bright, Jen A.; Marugán-Lobón, Jesús; Rayfield, Emily J.; and Cobb, Samuel N., "The Multifactorial Nature of Beak and Skull Shape Evolution in Parrots and Cockatoos (Psittaciformes)" (2019). *School of Geosciences Faculty and Staff Publications*. 2160.
https://digitalcommons.usf.edu/geo_facpub/2160


This Article is brought to you for free and open access by the School of Geosciences at Digital Commons @ University of South Florida. It has been accepted for inclusion in School of Geosciences Faculty and Staff Publications by an authorized administrator of Digital Commons @ University of South Florida. For more information, please contact digitalcommons@usf.edu.

RESEARCH ARTICLE

Open Access

The multifactorial nature of beak and skull shape evolution in parrots and cockatoos (Psittaciformes)



Jen A. Bright^{1*} , Jesús Marugán-Lobón^{2,3}, Emily J. Rayfield⁴ and Samuel N. Cobb^{5,6}

Abstract

Background: The Psittaciformes (parrots and cockatoos) are characterised by their large beaks, and are renowned for their ability to produce high bite forces. These birds also possess a suite of modifications to their cranial architecture interpreted to be adaptations for feeding on mechanically resistant foods, yet the relationship between cranial morphology and diet has never been explicitly tested. Here, we provide a three-dimensional geometric morphometric analysis of the developmental and biomechanical factors that may be influencing the evolution of psittaciformes' distinctive cranial morphologies.

Results: Contrary to our own predictions, we find that dietary preferences for more- or less- mechanically resistant foods have very little influence on beak and skull shape, and that diet predicts only 2.4% of the shape variation in psittaciform beaks and skulls. Conversely, evolutionary allometry and integration together predict almost half the observed shape variation, with phylogeny remaining an important factor in shape identity throughout our analyses, particularly in separating cockatoos (Cacatuoidea) from the true parrots (Psittacoidea).

Conclusions: Our results are similar to recent findings about the evolutionary trajectories of skull and beak shape in other avian families. We therefore propose that allometry and integration are important factors causing canalization of the avian head, and while diet clearly has an influence on beak shape between families, this may not be as important at driving evolvability within families as is commonly assumed.

Keywords: Birds, Geometric morphometrics, Allometry, Integration, Feeding, Parrots

Background

The overwhelming variety of forms presented by the skulls of modern birds have long been a source of inspiration for evolutionary and functional morphologists. Much of the skull disparity among the 11,000 or so species of extant birds is manifested in the shape of the beak, and there is a demonstrable link between the shape of this structure and preferred diet [1, 2]. However, the link between beak shape and diet, or feeding behaviour, is far from simple [3–5], and a myriad of other behavioural [6–8], homeostatic [9], evolutionary [3, 10–13], and structural and developmental factors [14, 15] work to generate variation in form in the beak and the rest of the skull.

In a previous paper, we showed that allometry, the concomitant change of shape with size, coupled to a strong integration between the beak and braincase, can account for some 80% of the phenotypic variation in raptorial birds [3]. As raptors are a polyphyletic group made up of several early-branching non-passerine landbird clades [16, 17], we suggested that integration underpinned by allometry may be the basal phenotypic condition organising the skulls of landbirds, a large and disparate clade comprising approximately 75% of all neoavian species. If true, such integration and allometry could highly constrain the range of shapes that may evolve within landbird families, and variation in the strength of this signal may have been critical in facilitating the propensity to vary (i.e., evolvability).

The parrots and cockatoos (Order: Psittaciformes) are a distinguishable group of landbirds sister to the passerines, and with 398 currently recognised species, they are one of the largest non-passerine clades [18]. These

* Correspondence: jabright@mail.usf.edu

¹School of Geosciences, University of South Florida, Tampa, FL 33620, USA
Full list of author information is available at the end of the article

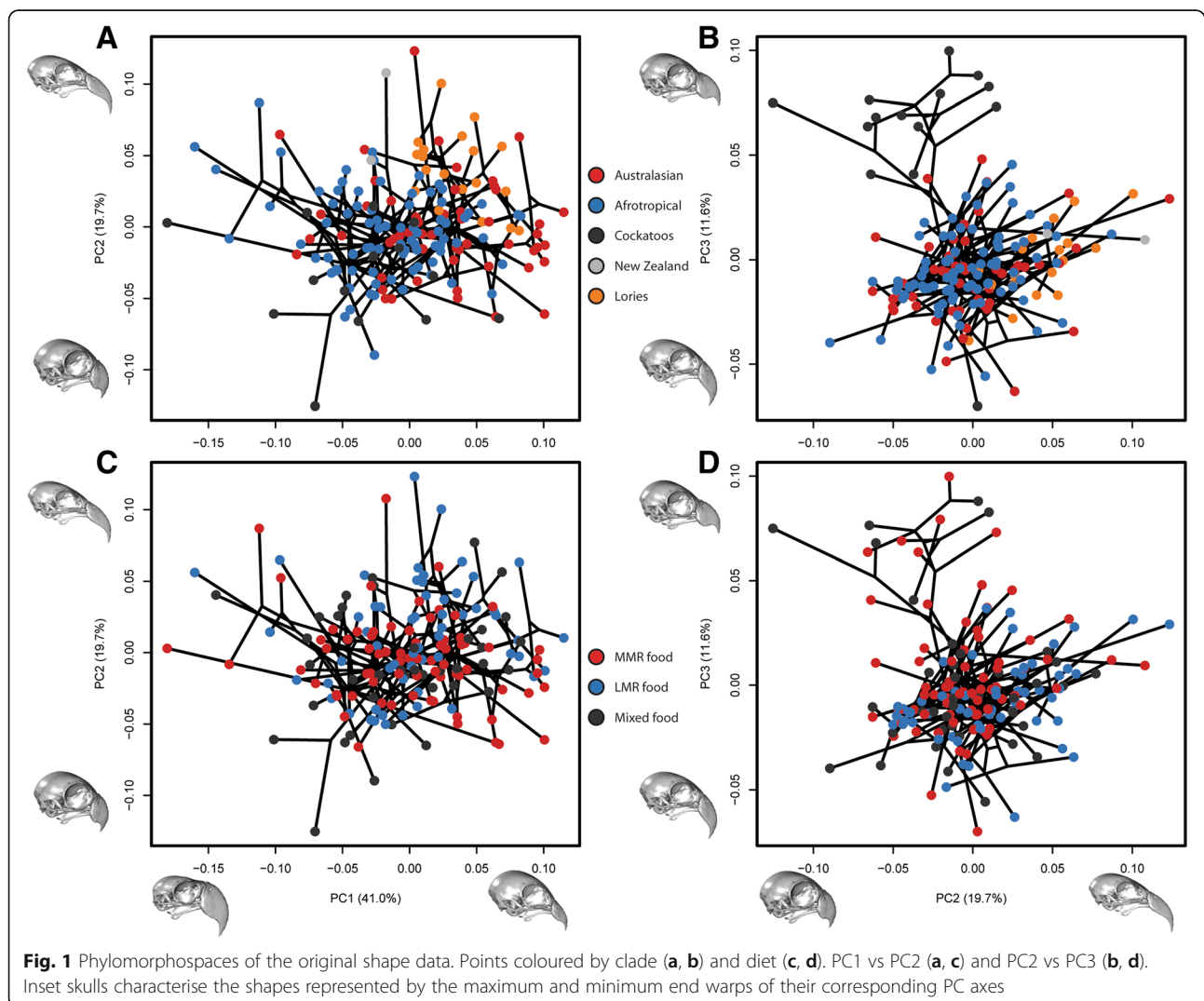


gregarious and intelligent birds are characterised by their brightly-coloured plumage and the presence of a deep, broad, and highly curved beak [18]. This beak, together with a muscular tongue and a suite of musculoskeletal adaptations affecting the palate, craniofacial hinge, and jaw adductors [19, 20] is used for extensive oral pre-processing of vegetation during feeding, and many Psittaciformes are anecdotally renowned for their ability to produce considerable bite forces in order to feed upon hard and tough nuts and seeds [18, 21, 22]. Furthermore, body mass within the group spans several orders of magnitude (from 12.1 g [*Micropsitta*] to 1331 g [*Anodorhynchus*] in flighted species, up to 2000 g in the flightless kakapo [*Strigops*] [23]). Psittaciformes' beaks are therefore likely subject to high selective pressures to accommodate high feeding forces, and thus provide an ideal test of the prevalence of allometry and integration in non-passerine landbirds where one might expect a strong functional signal.

Here, we use 3D geometric morphometrics to determine the extent to which allometry and integration are present in psittaciform skulls and beaks, and quantify the amount of variation that can be attributed to these factors. Based on our previous results in raptors [3], we hypothesise that both will be significant and major sources of phenotypic variation within the group. We further hypothesise that birds with a preference for diets comprising more resistant foods will have beak and skull shapes that are significantly different to those who prefer softer foods, and that the resistant food feeders will have beaks that are deeper and wider, in order to accommodate higher feeding stresses [2, 24, 25].

Results

Principal Component 1 (PC1; animation in Additional file 1) describes 41.0% of the variation (Fig. 1). Negative scores are associated with inflation of the beak dorsoventrally and anteroposteriorly, but not mediolaterally. There is a



corresponding flattening of the skull roof, lengthening of the jugal bars, repositioning of palate-ptyergoid complex to a more ventral position relative to rest of skull, and a slight rotation of occipital from a ventral to a more posterior orientation. Such shapes are characteristic of large cockatoos and macaws, whereas positive shapes are exemplified by small parakeets, hanging parrots, lorries, and lovebirds. On PC2 (19.7%; animation in Additional file 2), negative scores show a mediolateral widening and dorsoventral deepening of the beak and skull. The beak tip is deflected posteriorly, increasing the notch angle of the tomial edge. The occipital rotates to a more ventral orientation. Negative PC2 scores are characterised by the gang-gang cockatoo (*Callocephalon*) and positive scores are characterised by the vulturine parrot (*Psittarchas*) and the kea (*Nestor notabilis*). There is a slight tendency for Australasian birds to occupy more positive positions on PCs 1 and 2, whereas cockatoos and Afrotropical birds occupy more negative positions. Positive scores on PC3 (11.6%; animation in Additional file 3) show a dramatic increase in curvature of beak tomial edge, giving the appearance of a sinusoidal curve. A change in the angle between the braincase and the beak gives a concave dorsal profile. Positive PC3 scores are strongly associated with cockatoos, which plot separately to almost all other Psittaciformes, with the notable exception of *Probosciger* (palm cockatoo), which displays an extremely negative PC3 score due to its highly convex facial angle. A significant but small phylogenetic signal ($K_{mult} = 0.344$; $p = 0.001$) is evident, also reflected in the significant separation of major clades in PERMANOVA (all pairs $p = 0.003$; $p = 0.006$ if lorries designated as separate clade). Psittaciformes with a preference for resistant foods tend to occupy more positive regions of PC3 (Fig. 1d). While PERMANOVA indicates a weakly significant difference between MMR and LMR food feeders ($p = 0.033$; Table S1 in Additional file 4), we made a post-hoc prediction that this trend was driven by the morphological separation of the Cacatuidae (all of whom are MMR or mixed food feeders) from the other Psittaciformes on PC3. A post-hoc PERMANOVA with cockatoos removed showed that birds with different dietary preferences were not significantly different in shape (Table S2 in Additional file 4).

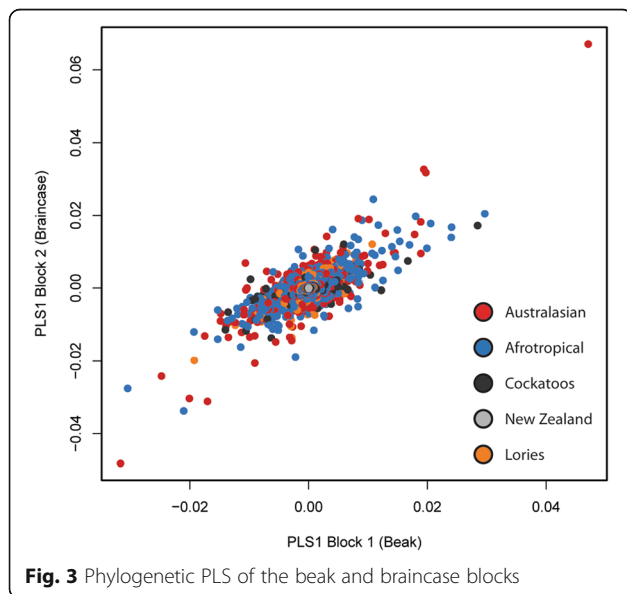
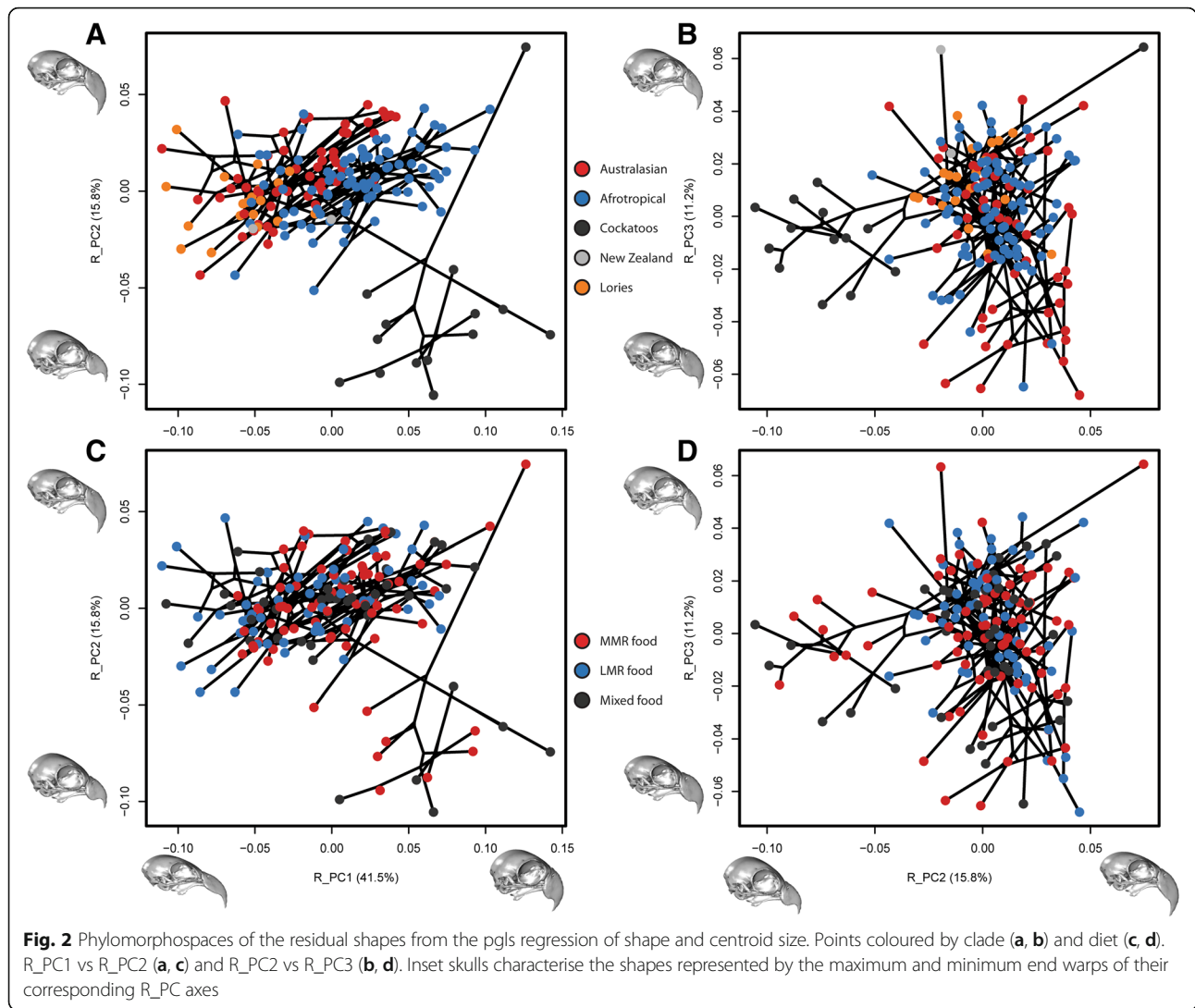
Linear regressions of shape against centroid size (CS) and diet reveal that both factors are significant ($p = 0.001$), but size predicts over 10 times more shape variation than diet does (CS $F = 88.1$, $R^2 = 0.338$; diet $F = 3.11$, $R^2 = 0.0239$). Much of the allometric variation is associated with phylogeny, as regression using PGLS drops these correlations by approximately half (CS $F = 38.3$, $R^2 = 0.184$, $p = 0.001$; diet $F = 1.90$, $R^2 = 0.0183$, $p = 0.02$). The shape changes predicted by the regression of CS (i.e. allometric shape changes) are very similar to those described by PC1, with larger skulls showing shapes characteristic of negative PC1 scores. Interestingly, the first three PCs of shape variation

devoid of allometry (i.e. the PGLS regression residuals: R_PCs 1, 2, and 3; 41.5, 15.8, and 11.2%) are strikingly similar to those of the original PCs 2, 3, and 4 (Fig. 2). Subfamily groups remain distinctive in pairwise comparisons of shape (all pairs $p = 0.003$; $p = 0.006$ if lorries designated as separate clade). After accounting for allometry in this way, soft food feeders are significantly different from parrots with MMR ($p = 0.006$) or mixed ($p = 0.045$) food preferences, but only LMR vs MMR food feeders remains significant ($p = 0.009$) when cockatoos are removed (Tables S3, S4 in Additional file 4).

Phylogenetic Partial Least Squares shows that the relationship between beak shape and skull shape is highly significant (rPLS = 0.885, $p = 0.001$; Fig. 3). This relationship between beak and braincase shape remains even after the removal of allometry (rPLS = 0.895, $p = 0.001$). Using the regression procedure outlined in Bright et al. [3], we show that the proportion of skull shape change driven by non-allometric integration is 31.1% ($F = 74.8$, $p = 0.001$). When considering phylogenetic structure in these regressions, allometry (18.4%) and integration (31.1%) are important factors, together controlling almost half of the skull and beak shape differences in parrots (49.5%). In the remaining 50.5%, phylogeny is significant ($K_{mult} = 0.459$, $p = 0.001$) and all subfamily groups are distinctive in pairwise comparisons (all pairs $p = 0.003$; $p = 0.006$ if lorries designated as separate clade). Phylogenetic regression of non-allometric non-integrated shape (NANI) to diet shows that diet is not significant ($p = 1$). Plots of the NANI shape in morphospace (Fig. 4) are similar to those of the non-allometric shape (Fig. 2).

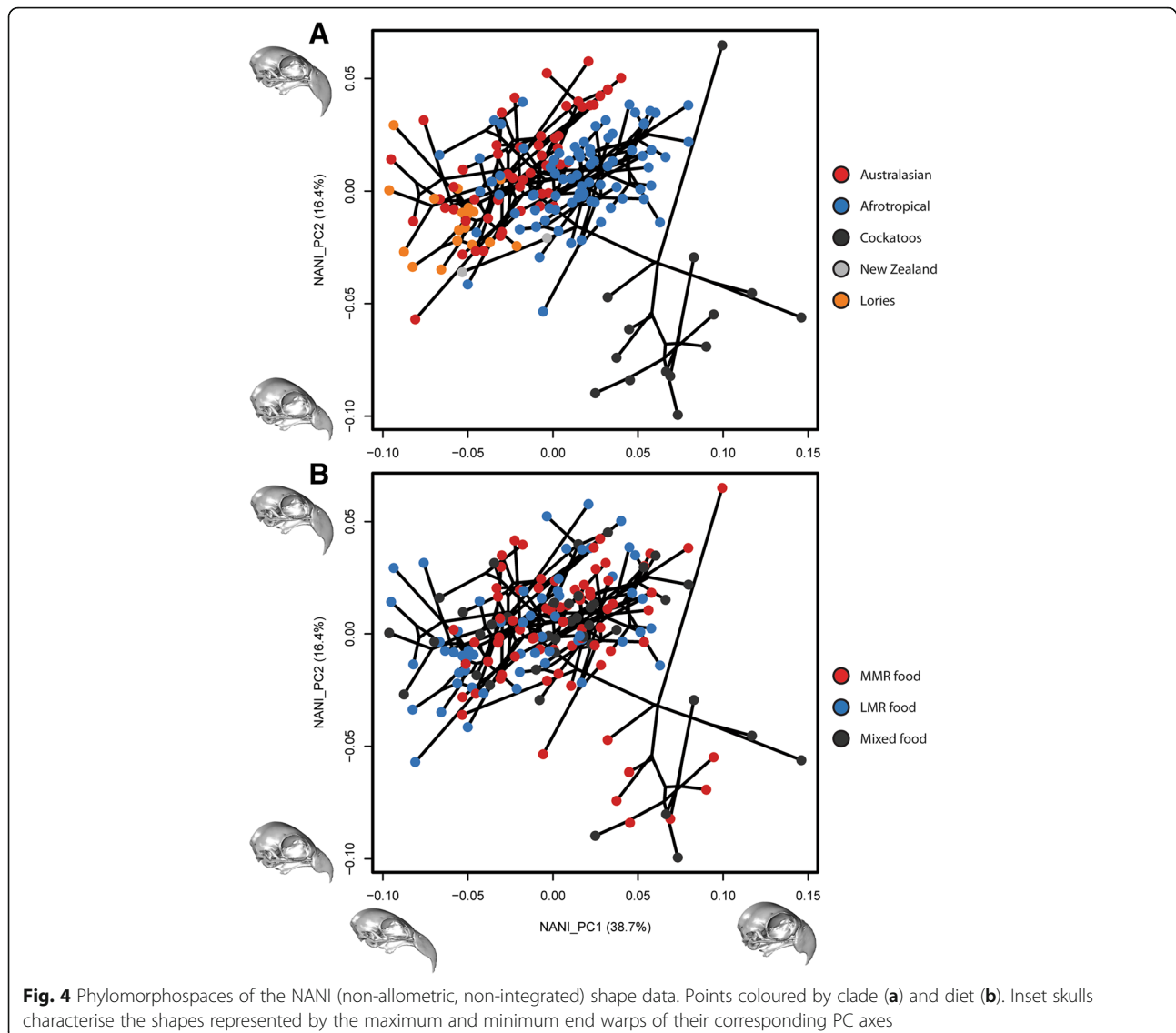
Discussion

In a recent study of the beaks of over 2000 bird genera, Cooney et al. [11] demonstrated that an early burst of phenotypic evolution generated a high disparity of beak shapes between avian clades (niche-expansion), and once these clade-characteristic shapes were established, birds tended to diversify by adjusting their beaks along the same common axes of variation (niche-filling). This observation entails that the major dimensions of shape variation within each avian clade are the same as those within other clades, suggesting that birds have a limited number of means by which to generate beak disparity. This premise of canalization is supported by experimental work showing that bird beaks and skulls develop along constrained genetic pathways [26–29]. Our results also indicate that allometric morphological change and integration between beak and braincase shape variation are two major factors underlying skull structure in psittaciform birds, as they together predict almost half of skull and beak shape. Although we accounted for phylogenetic similarity at every stage of the analyses, the remaining 50.5% of the shape variation appears to be



largely associated with phylogenetic inertia, probably driven by the fact that cockatoos have very different skulls and beak shapes to the true parrots. Importantly, our results here echo those of our previous study on birds of prey [3], where allometry and integration predicted 80% of skull shape (admittedly without accounting for the phylogenetic structure, as we have done here).

The confirmed and significant presence of these trajectories in groups as distinctive as the polyphyletic raptors, and now Psittaciformes, clearly emphasises allometry and integration as strong candidates governing the evolutionary pathways of beak shape macroevolution proposed by Cooney et al. [11]. Indeed, integration is often suggested as a mechanism by which evolution may be channelled [30–32], perhaps facilitated by allometry [33]. However, the observation that allometry and integration account for less variation in parrots than in raptors is crucial, as it indicates that while such trajectories may be common in landbirds, they may be of variable



importance in the evolvability of morphology among families. Parrots and cockatoos famously make extensive mechanical use of their large beaks, but despite a multitude of adaptations to the beak, palate, facial hinge, and jaw musculature, we find that skull and beak shape in these birds is only weakly related to dietary preferences, which account for a mere 2.4% of phenotypic variation. While initially quite surprising, there are several important factors to consider alongside this result. Firstly, while parrots can be broadly classified as seed eaters, and stand apart from other birds in wider morphometric analyses [11], the categories we have used in this study to define the dietary preferences within parrots are necessarily broad. Wild birds are somewhat opportunistic and may experience notable regional or seasonal differences in food availability within their species' ranges, falling back on generalised herbivory when necessary.

Although the fossil details of exactly where and when the crown group Psittaciformes originated remains somewhat ambiguous [34], a major burst of parrot diversification is thought to have occurred during the Miocene, and it has been suggested that this is tied to the aridification of Australia, and the contemporaneous uplift of the Andean and Tibetan plateaus in South America and Asia causing environmental fragmentation [35]. It is possible therefore, that the psittaciform clade is basally adapted to process fall-back foods during times of environmental instability, thus diminishing any signal based on data describing their preferred foods under ideal conditions. Secondly, it is important not to presume that diet is a good proxy for feeding behaviour. Some aspects of function or performance, such as bite force or speed of jaw closure, may demonstrate a tighter correlation to shape. Additionally, the presence of

many-to-one mapping patterns between function, form, and performance [36] may allow birds with similarly-shaped beaks to access many different foodstuffs, and for birds with differently-shaped beaks to access the same foodstuff by modifying their behaviour, hence blurring the signal between shape and diet. Thirdly, any morphological study of hard tissues only may under-represent differences in biting performance driven by differences in muscle configuration [37]. This is likely to be an important factor in parrots due to their heavily modified musculature away from the typical avian condition [20, 38], particularly as parrots with a *M. pseudomasseter* and *M. ethmomandibularis* may use these muscles to dramatically improve the efficiency of their jaws by lengthening the in-lever. Lastly, the seed-shelling behaviour of many parrots and cockatoos requires many small, precise, coordinated movements of the jaws and tongue to place and process food within the oral cavity [39]. Some species make notable use of the tongue to place food against small scale ridges and variations in the tomial edge that went unresolved by our landmarking, yet may be associated with different diets, even within the same species [40]. It is therefore possible that more finely resolved dietary categories, improved landmark coverage of more subtle differences in beak shape, or quantification of performance as well as shape, may improve the strength of the dietary signal.

Conclusions

We conclude that while diet undoubtedly affects the shape of bird beaks, on this phylogenetic scale its effects are overprinted by those of integration and allometry. Our study highlights that, even in structures with an obvious functional role, it is important to explicitly test the influence of a range of evolutionary variables, rather than blindly proceed on the assumption that biomechanical factors are the primary drivers behind organismal form.

Methods

Bird skulls are hard to scan: the bones are exceptionally thin, even becoming translucent in smaller species, and many useful landmarks are deeply recessed within the highly concave orbits, which are often “shaded” from the scanner. Their small size also makes it exceptionally difficult to manually trace semilandmark curves on physical specimens using a MicroScribe. To compensate for these difficulties without resorting to the prohibitively costly and time-intensive process of X-Ray Computer Tomography, we opted for a combined approach. Thirteen landmarks were measured from the left-hand side and midline of the beaks and braincases of 170 psittaciform species housed at the Smithsonian Institution National Museum of Natural History (Figure S1, Tables S5 and S6 in Additional file 4). Landmarks were collected using a

MicroScribe G2LX digitiser (Revware Systems, Inc., San Jose, CA), and those from the left were reflected across those from the midline and realigned using FileConverter (http://www.flywings.org.uk/fileConverter_page.htm) to give 20 landmarks in total.

These landmarks were imported in to HyperMesh 11.0 (Altair Engineering Inc., Troy, MI). Surfaces of the beak and skull roof of each specimen were also obtained using a NextEngine laser scanner and MultiDrive running ScanStudio HD Pro 1.3.2 (NextEngine, Inc. Santa Monica, CA), or in the case of two species whose skulls did not fit completely within the field of view of the NextEngine (*Probosciger aterrimus* [from 43 images], *Ara chloroptera* [from 37 images]), with digital photogrammetry (Nikon D3100 DSLR camera, Photoscan 0.9.0, AgiSoft, Russia). These were also imported, unaltered, in to HyperMesh. Because the landmarks and surfaces did not share a common global axis of ordination, the landmarks were translated and rotated to sit atop the surfaces in an appropriate position. Firstly, the landmark configuration was translated so that landmark 1, representing the tip of the beak from the MicroScribed specimen, sat directly on the tip of the beak from the scan. The configuration was then rotated so that the midline (LMs 8, 9, 11, 12, and 13), lateral beak (LMs 2, 3, 14, and 15), and jugal (LMs 6 and 18) landmarks sat in their correct positions on the scan. Semilandmarks were then collected directly in HyperMesh from the dorsal profiles of the beak and braincase, and bilaterally from the tomial edges, then resampled (resample.exe; <http://life.bio.sunysb.edu/morph/soft-utility.html>) to give 10 equally spaced semilandmarks along each curve. Measurements were performed on specimens without a keratinous rhamphotheca, as these are more commonly preserved in museum collections. All landmarking was performed by one researcher (J.A.B.). While this method probably introduces some error in to the data [41, 42] we expect such error to be consistent across all landmark configurations, and dwarfed by the much larger interspecific differences between skulls. As such, this should not affect the overall pattern of results.

A maximum clade credibility tree for the taxa in the study was constructed using TreeAnnotator [43] (Additional file 4: Figure S2), from a set of 1000 molecular trees with 50% burn-in [44] (www.birdtree.org), and imported to the R environment (v.3.5.1; [45]). The 20 landmarks and 40 semilandmarks were collated for each specimen and imported in to R, where all subsequent morphometric analysis was conducted using the package Geomorph 3.0.7 [46, 47]. The semilandmarks were slid to minimise bending energy [48], then subjected to a Procrustes Superimposition. The symmetric component of shape variation [49] was taken forward to a Principal Components Analysis (PCA) then plotted as a phylomorphospace using the package phytools [50] and tested for phylogenetic signal (Kmult [51]). The skull of a

Carolina parakeet (*Conuropsis carolinensis*; NHMUK 1853.7.12.11) was CT scanned (Nikon XT H 225 at the British Museum of Natural History, 0.026 mm resolution, 160 kV, 160 μ A) and the bones were segmented and landmarked in Avizo (version 7.0, Visualization Science Group) in order to create visualisations warps (Additional file 4: Figure S1, Additional files 1, 2, 3, and 5).

To get an initial overview of the sources of shape (i.e. the Procrustes aligned landmark configuration) variation in the sample, linear and Procrustes Phylogenetic Generalised Least Squares (PGLS, *procD.pgls* function in Geomorph [52]) regressions were performed against log centroid size (logCS) and diet (shape \sim logCS + diet), with significance assessed over 1000 permutations. Although the difficulties of observing parrots in the wild can hinder detailed knowledge of their diets [18], Wilman et al. [53] have classified Psittaciformes in to three categories of preferred diet which broadly reflect food mechanical resistivity: birds with preferences for generic plant material and seeds; omnivores; and birds with preferences for fruit and nectar. We reinterpret these categories mechanically as birds with preferences for more mechanically resistant (“MMR”; $n = 72$), mixed ($n = 40$), or less mechanically resistant (“LMR”; $n = 58$) food items respectively.

In addition to the initial morphospaces, we generated PCA ordinations of the CS-regression residuals to visualise non size-related (non-allometric) shape changes within Psittaciformes. Covariation between the beak and the braincase was assessed over 1000 permutations using two-block within-configuration phylogenetic PLS [54]. As described in Bright et al. [3], we regressed the PLS1 Block 1 scores of the non-allometric data against those of PLS1 Block 2, then regressed the prediction scores of this regression against the residuals of the regression to log centroid size (the non-allometric shape) using PGLS, the residuals of which were taken to represent the non-allometric, non-integrated shape.

To assess whether shape differences between major clades, and birds with different dietary preferences, were significant, Euclidean pairwise PERMANOVA of the Principal Component (PC) scores across all PCs was conducted using the R package pairwiseAdonis [55]. With the exception of the cockatoos, which have several unifying morphological characteristics [21], the broad similarity of forms within the Psittaciformes has made the classification of groups historically troublesome, and designating clades of equivalent taxonomic rank is not straightforward. Joseph et al. [56] have proposed three superfamilies within Psittaciformes: Strigopoidea (the New Zealand parrots, *Strigops* and *Nestor*; 3 species), Cacatuoidea (cockatoos; 21 species), and the Psittacoidea (true parrots; 374 species). They further divide the Psittacoidea in to three families: the Psittacidae (new world parrots), Psittaculidae (Australasian parrots), and Psittichasidae

(*Psittichas* and *Coracopsis*). While lorries (Loriinae) have traditionally been considered as perhaps warranting family status, they are nested within the Psittaculidae, and should therefore be considered a subfamily. We therefore designated three clades that accommodate these taxonomic difficulties while maintaining analytically useful group sizes: cockatoos (Cacatuidae; $n = 14$), Australasians (Psittaculidae; $n = 72$), and afrotropicals (Psittacidae + Psittichasidae; $n = 82$). Lorries ($n = 19$) were later extracted from the Australasian group and designated as an additional group in post hoc analyses. The Strigopoidea are sister to all other Psittaciformes, and as they were only represented by two specimens in this study, they were excluded from the pairwise analyses as they did not easily fit in to any other monophyletic group. All R code and data associated with our analyses are available in Additional file 6.

Additional files

Additional file 1: Animation cycling between maximum and minimum warps of PC1, scale factor = 1. Warp template is based on a CT scan of *Conuropsis carolinensis*. (GIF 1082 kb)

Additional file 2: Animation cycling between maximum and minimum warps of PC2, scale factor = 1. Warp template is based on a CT scan of *Conuropsis carolinensis*. (GIF 987 kb)

Additional file 3: Animation cycling between maximum and minimum warps of PC3, scale factor = 1. Warp template is based on a CT scan of *Conuropsis carolinensis*. (GIF 929 kb)

Additional file 4: Supplementary figures and tables. (DOCX 1620 kb)

Additional file 5: Interactive 3D visualisations of the maximum and minimum warps along PCs 1–3. Warp template is based on a CT scan of *Conuropsis carolinensis*. (PDF 33801 kb)

Additional file 6: Zipped folder containing supplementary data files and code. BrightetalParrotsGM.R: R script used for running analysis. R input data: Ccarolinensis.ply; EltonTraits1.csv; landpairs.txt; NewParrots.tre; parrot.lms.txt; Parrot_preSlide.txt; ParrotGroups.csv; sliders.txt. (ZIP 2110 kb)

Abbreviations

CS: Centroid Size; CT: Computer Tomography; LMR: Less Mechanically Resistant; MMR: More Mechanically Resistant; NANI: Non-allometric Non-integrated; NHMUK: Natural History Museum, UK; PC: Principal Component; PCA: Principal Components Analysis; PGLS: Phylogenetic Generalised Least Squares; PLS: Partial Least Squares; R_PC: post-Regression Principal Component

Acknowledgements

Chris Milensky (Smithsonian National Museum of Natural History), and Jo Cooper and Judith White (Natural History Museum at Tring) are thanked for access to collections. *C. carolinensis* was scanned by Dan Sykes at the Natural History Museum, South Kensington.

Funding

This project was supported by BBSRC grants BB/I011668/1 and BB/I011714/1. Funders had no role in the study beyond providing finances.

Availability of data and materials

Data and code supporting our analyses are available in the supplementary information.

Authors' contributions

JAB collected and analysed the morphometrics data. JAB, JM-L, SNC, and EJR collaboratively designed the study, interpreted the results, and drafted, read, and approved the manuscript.

Ethics approval and consent to participate

All animal tissues measured in this study were housed in museum collections, detailed in the supplementary information and, where appropriate, the main text. No new specimens were collected for this study. Permissions were not necessary to collect the materials in this study.

Consent for publication

Not applicable.

Competing interests

The authors declare that they have no competing interests.

Publisher's Note

Springer Nature remains neutral with regard to jurisdictional claims in published maps and institutional affiliations.

Author details

¹School of Geosciences, University of South Florida, Tampa, FL 33620, USA. ²Unidad de Paleontología, Departamento Biología, Universidad Autónoma de Madrid, Cantoblanco, 28049 Madrid, Spain. ³Dinosaur Institute, Natural History Museum of Los Angeles County, Los Angeles, CA 90007, USA. ⁴School of Earth Sciences, University of Bristol, Bristol BS8 1TQ, UK. ⁵Department of Archaeology, University of York, York YO10 5DD, UK. ⁶Hull York Medical School, University of York, York YO10 5DD, UK.

Received: 12 January 2019 Accepted: 6 May 2019

Published online: 17 May 2019

References

- Grant BR, Grant PR. Evolution of Darwin's finches caused by a rare climatic event. *Proc R Soc B Biol Sci.* 1993;251(1331):111–7.
- Soons J, Genbrugge A, Podos J, Adriaens D, Aerts P, Dirckx J, et al. Is beak morphology in Darwin's finches tuned to loading demands? *PLoS One.* 2015;10(6):e0129479.
- Bright JA, Marugán-Lobón J, Cobb SN, Rayfield EJ. The shapes of bird beaks are highly controlled by nondietary factors. *PNAS.* 2016;113(19):5352–7.
- Feeding in Birds RM. Approaches and opportunities. In: Schwenk K, editor. *Feeding.* San Diego, California: Academic Press; 2000. p. 395–408.
- Navalón G, Bright JA, Marugán-Lobón J, Rayfield EJ. The evolutionary relationship among beak shape, mechanical advantage, and feeding ecology in modern birds. *Evolution.* 2018. <https://doi.org/10.1111/evo.13655>.
- Clayton DHM, Moyer BR, Bush SE, Jones TG, Gardiner DW, Rhodes BB, Goller F. Adaptive significance of avian beak morphology for ectoparasite control. *Proc R Soc B Biol Sci.* 2010;272:811–7.
- Rico-Guevara A, Araya-Salas M. Bills as daggers? A test for sexually dimorphic weapons in a lekking hummingbird. *Behav Ecol.* 2015;26(1):21–9.
- Huber SK, Podos J. Beak morphology and song features covary in a population of Darwin's finches (*Geospiza fortis*). *Biol J Linn Soc.* 2006;88:489–98.
- Tattersall GJ, Arnaout B, Symonds MRE. The evolution of the avian bill as a thermoregulatory organ. *Biol Rev.* 2016;92:1630–56.
- Klingenberg CP, Marugán-Lobón J. Evolutionary covariation in geometric morphometric data: analyzing integration, modularity, and allometry in a phylogenetic context. *Syst Biol.* 2013;62(4):591–610.
- Cooney CR, Bright JA, Capp EJR, Chira AM, Hughes EC, Moody CJA, et al. Mega-evolutionary dynamics of the adaptive radiation of birds. *Nature.* 2017;542:344–7.
- Chira AM, Cooney CR, Bright JA, Capp EJR, Hughes EC, Moody CJA, et al. Correlates of rate heterogeneity in avian ecomorphological traits. *Ecol Lett.* 2018;21:1505–14.
- Felice RN, Goswami A. Developmental origins of mosaic evolution in the avian cranium. *PNAS.* 2018;115:555–60.
- Marugán-Lobón J, Blanco Miranda D, Chamero B, Martín Abad H. On the importance of examining the relationship between shape data and biologically meaningful variables. An example studying allometry with geometric morphometrics. *Spanish J Palaeontol.* 2013;28:139–48.
- Young NM, Linde-Medina M, Fondon JWI, Hallgrímsson B, Marcucio RS. Craniofacial diversification in the domestic pigeon and the evolution of the avian skull. *Nature Ecology Evol.* 2017;1:0095.
- Prum RO, Berv JS, Dornburg A, Field DJ, Townsend JP, Lemmon EM, et al. A comprehensive phylogeny of birds (Aves) using targeted next-generation DNA sequencing. *Nature.* 2015;526(7574):569–73.
- Jarvis ED, Mirarab S, Aberer AJ, Li B, Houde P, Li C, et al. Whole-genome analyses resolve early branches in the tree of life of modern birds. *Science.* 2014;346(6215):1320–31.
- Collar N. Parrots (*Psittacidae*). 2018. In: *Handbook of Birds of the world alive* [Internet]. Barcelona: Lynx Edicions.
- Tokita M. The skull development of parrots with special reference to the emergence of a morphologically unique Cranio-facial hinge. *Zool Sci.* 2003;20(6):749–58.
- Tokita M, Kiyoshi T, Armstrong KN. Evolution of craniofacial novelty in parrots through developmental modularity and heterochrony. *Evol Dev.* 2007;9(6):590–601.
- Rowley I. Cockatoos (*Cacatuidae*). 2018. In: *Handbook of Birds of the world alive* [Internet]. Barcelona: Lynx Edicions.
- Carril J, Degrange FJ, Tambussi CP. Jaw myology and bite force of the monk parakeet (*Aves, Psittaciformes*). *J Anat.* 2015;227:33–44.
- Dunning JBJCRC. *Handbook of avian body masses* (2nd edition). Florida. USA: CRC Press; 2008.
- Soons J, Herrel A, Genbrugge A, Aerts P, Podos J, Adriaens D, et al. Mechanical stress, fracture risk and beak evolution in Darwin's ground finches (*Geospiza*). *Philos Trans R Soc Lond Ser B Biol Sci.* 2010;365(1543):1093–8.
- Herrel A, Podos J, Huber SK, Hendry AP. Bite performance and morphology in a population of Darwin's finches; implications for the evolution of beak shape. *Funct Ecol.* 2005;19:43–8.
- Abzhanov A, Kuo WP, Hartmann C, Grant BR, Grant PR, Tabin CJ. The calmodulin pathway and evolution of elongated beak morphology in Darwin's finches. *Nature.* 2006;442(7102):563–7.
- Abzhanov A, Protas M, Grant BR, Grant PR, Tabin CJ. Bmp4 and morphological variation of beaks in Darwin's finches. *Science.* 2004;305(5689):1462–5.
- Fritz JA, Brancale J, Tokita M, Burns KJ, Hawkins MB, Abzhanov A, et al. Shared developmental programme strongly constrains beak shape diversity in songbirds. *Nat Commun.* 2014;5:3700.
- Hu D, Young NM, Xu Q, Jamniczky H, Green RM, Mio W, et al. Signals from the brain induce variation in avian facial shape. *Dev Dyn.* 2015;244:1133–43.
- Goswami A, Smaers JB, Soligo C, Polly PD. The macroevolutionary consequences of phenotypic integration: from development to deep time. *Philos Trans R Soc Lond Ser B Biol Sci.* 2014;369(1649):20130254.
- Felice RN, Randau M, Goswami A. A fly in a tube: macroevolutionary expectations for integrated phenotypes. *Evolution.* 2018. <https://doi.org/10.1111/evo.13608>.
- Villmoare B. Morphological integration, evolutionary constraints, and extinction: a computer simulation-based study. *Evol Biol.* 2012;40(1):76–83.
- Marroig G, Shirai LT, Porto A, de Oliveira FB, De Conto V. The evolution of modularity in the mammalian skull II: evolutionary consequences. *Evol Biol.* 2009;36(1):136–48.
- Waterhouse DM. Parrots in a nutshell: the fossil record of Psittaciformes (Aves). *Hist Biol.* 2006;18(2):227–38.
- Schweizer M, Seehausen O, Hertwig ST. Macroevolutionary patterns in the diversification of parrots: effects of climate change, geological events and key innovations. *J Biogeogr.* 2011;38(11):2176–94.
- Lauder GV. On the inference of function from structure. In: Thomason JJ, editor. *Functional morphology in vertebrate paleontology.* Cambridge, UK: Cambridge University Press; 1995. p. 1–18.
- Van der Meij MAA, Bout RG. The relationship between shape of the skull and bite forces in finches. *J Exp Biol.* 2008;211:1668–80.
- Tokita M. Morphogenesis of parrot jaw muscles: understanding the development of an evolutionary novelty. *J Morphol.* 2004;259(1):69–81.
- Homberger DG. The avian lingual and laryngeal apparatus within the context of the head and jaw apparatus, with comparisons to the mammalian condition: functional morphology and biomechanics of evaporative cooling, feeding, drinking, and vocalization. In: Maina JN, editor. *The biology of the avian respiratory system: evolution, development, structure and function.* Cham: Springer International Publishing; 2017. p. 27–97.
- Homberger DG. Comparative beak morphology of two subspecies of Australian red-tailed black-cockatoos: small changes with significant functional effects as a model for macroevolutionary processes. *Anat Rec.* 2016;299:131–2.
- Fruciano C. Measurement error in geometric morphometrics. *Dev Genes Evol.* 2016;226:139–58.

42. Fruciano C, Celik MA, Butler K, Dooley T, Weisbecker V, Phillips MJ. Sharing is caring? Measurement error and the issues arising from combining 3D morphometric datasets. *Ecology and Evolution*. 2017;7:7034–46.
43. Bouckaert R, Heled J, Kuhnert D, Vaughan T, Wu CH, Xie D, et al. BEAST 2: a software platform for Bayesian evolutionary analysis. *PLoS Comput Biol*. 2014;10(4):e1003537.
44. Jetz W, Thomas GH, Joy JB, Hartmann K, Mooers AO. The global diversity of birds in space and time. *Nature*. 2012;491(7424):444–8.
45. R Core Team. R: a language and environment for statistical computing. 2018: v. 3.5.1.
46. Adams DC, Collyer ML, Kaliontzopoulou A, Sherratt E. Geomorph: software for geometric morphometric analysis. 2017: v. 3.0. p. 7. <https://cran.r-project.org/package=geomorph>
47. Adams DC, Otárola-Castillo E. Geomorph: an R package for the collection and analysis of geometric morphometric shape data. *Methods Ecol Evol*. 2013;4(4):393–9.
48. Gunz P, Mitteroecker P, Bookstein FL. Semilandmarks in three dimensions. In: Slice DE, editor. *Modern morphometrics in physical anthropology*. New York: Kluwer Academic/Plenum Publishers; 2005. p. 73–98.
49. Mardia KV, Bookstein FL, Moreton IJ. Statistical assessment of bilateral symmetry of shapes. *Biometrika*. 2000;87:285–300.
50. Revell LJ. Phytools: an R package for phylogenetic comparative biology (and other things). *Methods Ecol Evol*. 2012;3(2):217–23.
51. Adams DC. A generalized *K* statistic for estimating phylogenetic signal from shape and other high-dimensional multivariate data. *Syst Biol*. 2014;63(5): 685–97.
52. Adams DC. A method for assessing phylogenetic least squares models for shape and other high-dimensional multivariate data. *Evolution*. 2014;68: 2675–88.
53. Wilman H, Belmaker J, Simpson J, de la Rossa C, Rivadeneira MM, Jetz W. EltonTraits 1.0: species-level foraging attributes of the world's birds and mammals. *Ecology*. 2014;95:2027.
54. Adams DC, Felice RN. Assessing trait covariation and morphological integration on phylogenies using evolutionary covariance matrices. *PLoS One*. 2014;9(4):e94335.
55. pairwiseAdonis MAP. Pairwise multilevel comparison using Adonis; 2017. p. v. 0.1. <https://github.com/pmartinezarbizu/pairwiseAdonis>
56. Joseph L, Toon A, Schirtzinger EE, Wright TF, Schodde R. A revised nomenclature and classification for family-group taxa of parrots (Psittaciformes). *Zootaxa*. 2012;3205:26–40.

Ready to submit your research? Choose BMC and benefit from:

- fast, convenient online submission
- thorough peer review by experienced researchers in your field
- rapid publication on acceptance
- support for research data, including large and complex data types
- gold Open Access which fosters wider collaboration and increased citations
- maximum visibility for your research: over 100M website views per year

At BMC, research is always in progress.

Learn more biomedcentral.com/submissions

