

5-1-2012

Identification of Amino Acids Essential for Estrone-3-Sulfate Transport within Transmembrane Domain 2 of Organic Anion Transporting Polypeptide 1B1

Nan Li

South China Agricultural University

Weifang Hong

South China Agricultural University

Hong Huang

University of South Florida, honghuang@usf.edu

Hanping Lu

Zhongshan University

Guangyun Lin

Zhongshan University

See next page for additional authors

Follow this and additional works at: https://digitalcommons.usf.edu/si_facpub



Part of the [Biology Commons](#), and the [Cell and Developmental Biology Commons](#)

Scholar Commons Citation

Li, Nan; Hong, Weifang; Huang, Hong; Lu, Hanping; Lin, Guangyun; and Hong, Mei, "Identification of Amino Acids Essential for Estrone-3-Sulfate Transport within Transmembrane Domain 2 of Organic Anion Transporting Polypeptide 1B1" (2012). *School of Information Faculty Publications*. 143.
https://digitalcommons.usf.edu/si_facpub/143

This Article is brought to you for free and open access by the School of Information at Digital Commons @ University of South Florida. It has been accepted for inclusion in School of Information Faculty Publications by an authorized administrator of Digital Commons @ University of South Florida. For more information, please contact digitalcommons@usf.edu.

Authors

Nan Li, Weifang Hong, Hong Huang, Hanping Lu, Guangyun Lin, and Mei Hong

Identification of Amino Acids Essential for Estrone-3-Sulfate Transport within Transmembrane Domain 2 of Organic Anion Transporting Polypeptide 1B1

Nan Li¹, Weifang Hong¹, Hong Huang², Hanping Lu³, Guangyun Lin³, Mei Hong^{1*}

1 College of Life Science, South China Agricultural University, Guangzhou, China, **2** School of Information, University of South Florida, Tampa, Florida, United States of America, **3** Zhongshan School of Medicine, Zhongshan (Sun Yat-sen) University, Guangzhou, China

Abstract

As an important structure in membrane proteins, transmembrane domains have been found to be crucial for properly targeting the protein to cell membrane as well as carrying out transport functions in transporters. Computer analysis of OATP sequences revealed transmembrane domain 2 (TM2) is among those transmembrane domains that have high amino acid identities within different family members. In the present study, we identify four amino acids (Asp70, Phe73, Glu74, and Gly76) that are essential for the transport function of OATP1B1, an OATP member that is specifically expressed in the human liver. A substitution of these four amino acids with alanine resulted in significantly reduced transport activity. Further mutagenesis showed the charged property of Asp70 and Glu74 is critical for proper function of the transporter protein. Comparison of the kinetic parameters indicated that Asp70 is likely to interact with the substrate while Glu74 may be involved in stabilizing the binding site through formation of a salt-bridge. The aromatic ring structure of Phe73 seems to play an important role because substitution of Phe73 with tyrosine, another amino acid with a similar structure, led to partially restored transport function. On the other hand, replacement of Gly76 with either alanine or valine could not recover the function of the transporter. Considering the nature of a transmembrane helix, we proposed that Gly76 may be important for maintaining the proper structure of the protein. Interestingly, when subjected to transport function analysis of higher concentration of estrone-3-sulfate (50 μ M) that corresponds to the low affinity binding site of OATP1B1, mutants of Phe73, Glu74, and Gly76 all showed a transport function that is comparable to that of the wild-type, suggesting these amino acids may have less impact on the low affinity component of estrone-3-sulfate within OATP1B1, while Asp 70 seems to be involved in the interaction of both sites.

Citation: Li N, Hong W, Huang H, Lu H, Lin G, et al. (2012) Identification of Amino Acids Essential for Estrone-3-Sulfate Transport within Transmembrane Domain 2 of Organic Anion Transporting Polypeptide 1B1. *PLoS ONE* 7(5): e36647. doi:10.1371/journal.pone.0036647

Editor: Hendrik W. van Veen, University of Cambridge, United Kingdom

Received: November 30, 2011; **Accepted:** April 11, 2012; **Published:** May 4, 2012

Copyright: © 2012 Li et al. This is an open-access article distributed under the terms of the Creative Commons Attribution License, which permits unrestricted use, distribution, and reproduction in any medium, provided the original author and source are credited.

Funding: This work was supported by Guangdong Province Talent Introduction Project Grant (2009) to MH. The funders had no role in study design, data collection and analysis, decision to publish, or preparation of the manuscript.

Competing Interests: The authors have declared that no competing interests exist.

* E-mail: mh2788@scau.edu.cn

Introduction

The organic anion transporting polypeptides (OATPs, gene symbol *SLCO*) are a family of transporters that mediate sodium-independent transport of a wide spectrum of structurally independent compounds [1]. Substrates of OATPs are mainly amphipathic organic molecules such as bile salts, hormones and their conjugates, toxins, and different drugs. Besides these charged compounds, they also transport uncharged drugs such as glycosides digoxin [2] and ouabain [3]. Because of their broad substrate specificity, wide tissue distribution and the involvement of drug-drug interaction, OATPs have been extensively recognized as key determinants of absorption, distribution, metabolism, and excretion (ADME) of various drugs, xenobiotics and toxins [4,5]. The first discovered human member of the OATP family was OATP1A2 that was cloned as an ortholog of rat *Oatp1a1* [6]. So far there are 11 members of the human OATP family: OATP1A2, 1B1, 1B3, 1C1, 2A1, 2B1, 3A1, 4A1, 4C1, 5A1, and 6A1 [7–9]. Some OATPs are expressed ubiquitously; while others, such as OATP1B1 and OATP1B3, are predominantly found in certain organs or tissues. OATP1B1 is the major OATP located at

the basolateral membrane of human hepatocytes and plays an essential role in drug clearance from the body [10]. In recent years, more and more drugs have been shown to be substrates of this OATP family member [11].

Although substrate specificity of transporter proteins are under extensive study, the underlying mechanisms for substrate binding and/or recognition remain largely unknown because the crystal structures of most mammalian drug transporters have not yet been solved [12]. Transmembrane domains (TMs) are essential structural features of membrane proteins and have been proposed to be critically involved in the proper function of other transporters such as organic anion transporters (OATs) [13,14]. It was also shown that TM 8 and 9 in OATP1B1 are critical for its substrate recognition [12]. Several important amino acids were identified in TM10 of OATP1B1. L545 located in TM10 may be facing the putative substrate translocation pathway and interact directly with substrates. In contrast, F546, L550, and S554 are predicted to face the inside of the protein and most likely affect normal protein structure. However, only simultaneous mutation of these four residues resulted in significantly reduced OATP1B1-mediated transport [15]. A recent study demonstrated that in OATP1B3,

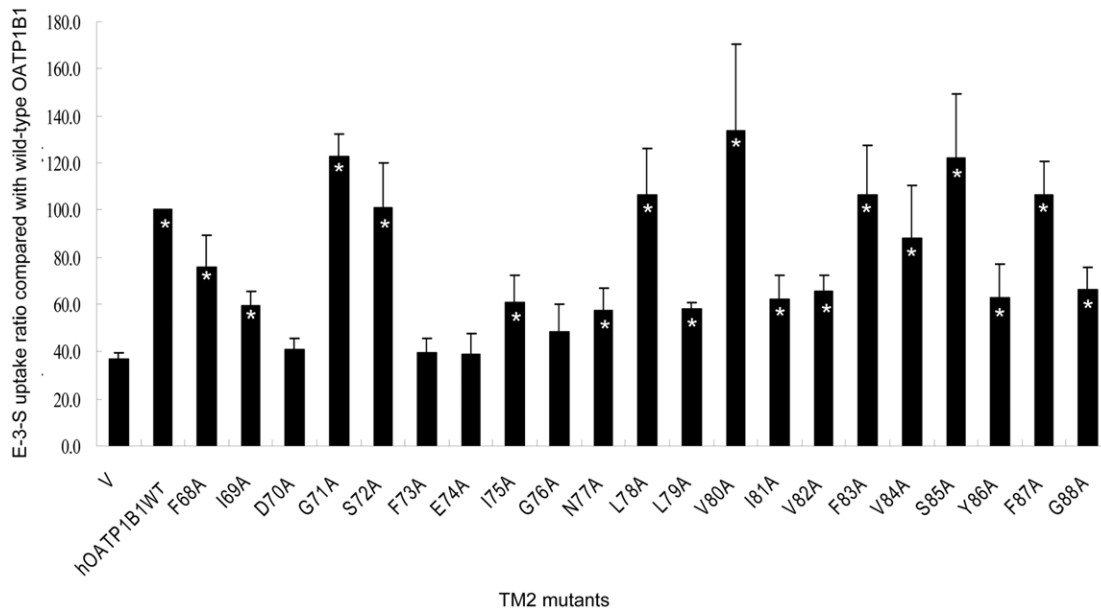


Figure 1. Estrone-3-sulfate uptake of OATP1B1 transmembrane domain 2 mutants. Transport of 100 nM E-3-S in HEK293 cells expressing OATP1B1 and its alanine-substituted mutants was measured. Uptake activity was expressed as a percentage of the uptake measured in wild-type. The results represent data from three experiments, with triplicate measurements for each mutant. The results shown are means \pm S.E. ($n=3$). Asterisks indicate values significantly different ($p<0.05$) from that of mock control (V). doi:10.1371/journal.pone.0036647.g001

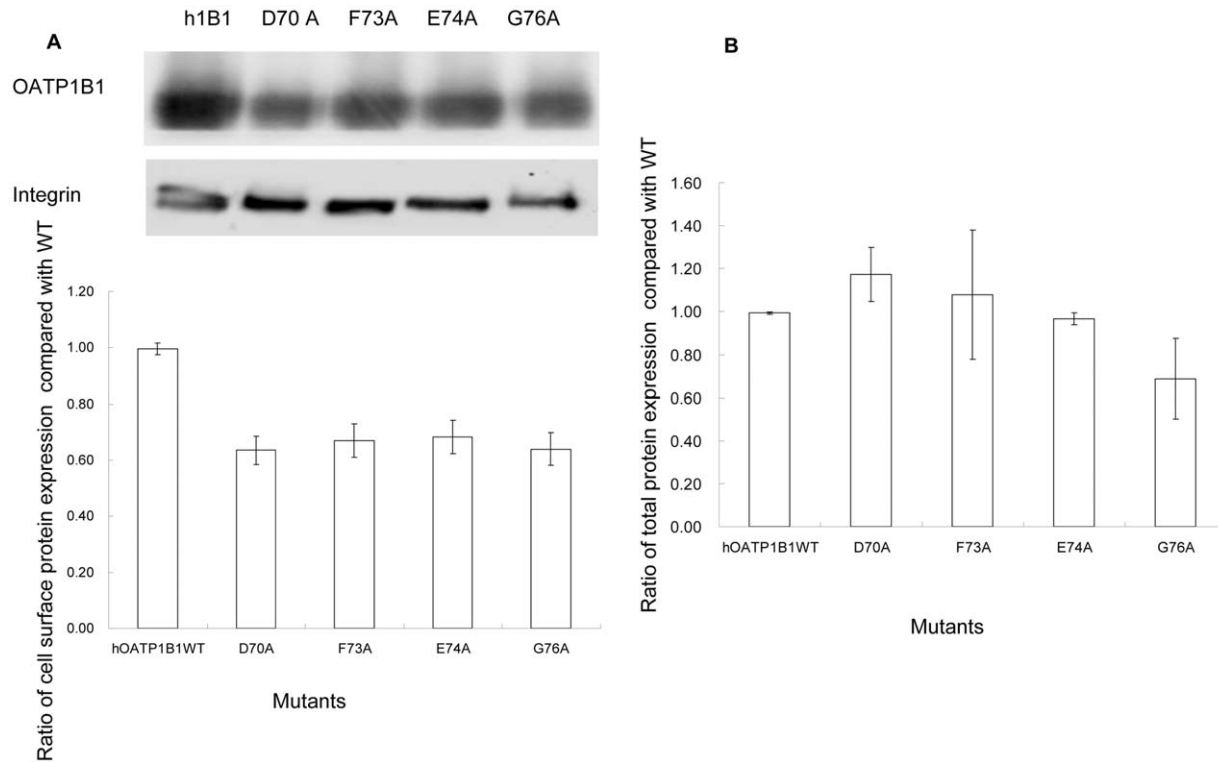


Figure 2. Protein expression of mutants with reduced transport activity. **A.** Cell surface expression of OATP1B1 and mutants. Upper panel, representative blot of OATP1B1 and mutants (D70A, F73A, E74A, G76A). Lower panel, the intensity was quantified relative to the wild-type. Cells were biotinylated, and the biotin-labeled cell surface proteins were precipitated with streptavidin beads, separated by SDS-PAGE, followed by Western blotting with anti-HA antibody. Same blot was probed with integrin antibody as surface protein loading control. **B.** Total protein expression of OATP1B1 and mutants. Cells were lysed with RIPA buffer, separated by SDS-PAGE, followed by Western blotting with anti-HA antibody. The band intensity was quantified relative to the wild-type. The results shown are means \pm S.E. ($n=3$). doi:10.1371/journal.pone.0036647.g002

K41 in TM1 and R580 in TM11 were critical for bromosulphthalein (BSP) transport [16]. According to computer-based hydrophathy analysis, OATP1B1 as well as other OATP members are predicted to share a very similar transmembrane domain organization with 12 transmembrane domains and a large extracellular loop 5 with conservative cysteine residues [7]. Computer analysis of OATP sequences revealed that several transmembrane domains such as TM 2, 3, 4, and 11 have high amino acid identity [17], which suggests that these domains are conserved in the whole family and may play essential roles in their transport activity. A large number of single nucleotide polymorphism (SNPs) and other sequence variations have been reported in the *SLCO1B1* gene [18], and it was demonstrated that SNPs located within the transmembrane domains often result in functional changes [19], further suggesting that transmembrane domains are key determinants in the proper transport functions of OATPs.

In the present study, we performed alanine-scanning and site-directed mutagenesis for the study of amino acids within putative TM2 of OATP1B1. Four important amino acids (Asp70, Phe73, Glu74, and Gly76) that are critical for low concentration estrone-3-sulfate (E-3-S) uptake ($<1 \mu\text{M}$) were identified. Further study suggested that the side chain characteristics of these amino acids are important for maintaining proper transport functions. Asp70, Phe73, and Glu74 maybe localized within the pore-facing side of the transport protein and interact with the substrate, while Gly76

may be important for maintaining the proper structure of the protein. On the other hand, there was a partial transport function for higher concentration of E-3-S ($50 \mu\text{M}$) in mutants F73A, E74A and G76A, suggesting these amino acids may have less impact on the low affinity component of E-3-S within OATP1B1.

Methods

Materials

[^3H]Estrone-3-sulfate (E-3-S) was purchased from PerkinElmer Life Sciences (Waltham, MA). Sulfosuccinimidyl 2- (biotinamido)-ethyl-1, 3-dithiopropionate (NHS-SS-biotin), and streptavidin-agarose beads were purchased from Thermo Scientific (Rockford, IL). All other reagents were purchased from Sigma except otherwise stated.

Site-directed mutagenesis

Mutant transporters were generated using the QuikChange Lightning Site-Directed Mutagenesis Kit from Agilent (Santa Clara, CA). The pReceiver M07 vector containing the *SCLO1B1* gene and 3-HA tags at the C-terminus was obtained from Genecopoeia (Rockville, MD) and used as the template for the mutagenesis. All mutant sequences were confirmed by full length sequencing (Invitrogen).

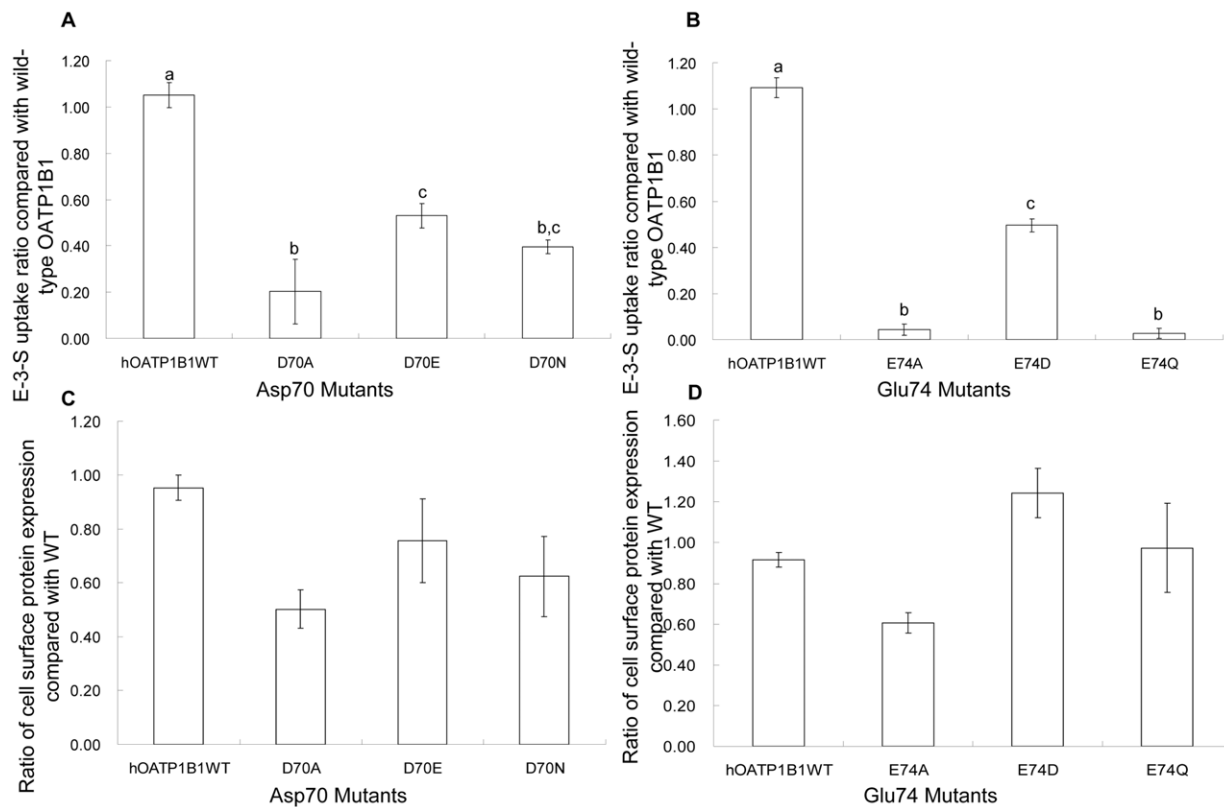


Figure 3. Effects of mutagenesis on negatively charged amino acids. **A.** E-3-S uptake of Asp70 mutants and **B.** Glu74 mutants. Uptake of 100 nM E-3-S was measured in OATP1B1 wild-type and D70A, D70E and D70N as well as in E74A, E74D and E74Q. Net uptake was obtained by subtracting the uptake of cells transfected with empty vector from cells expressing wild-type OATP1B1 or its mutants. Uptake of mutants was normalized to transporter expression at the cell surface in the same batch of cells and quantified relative to that of the wild-type. **C.** Cell surface expression of Asp70 mutants and **D.** Glu74 mutants. The results shown are means \pm S.E. ($n = 3$). Different letters indicate values that are significantly different ($p < 0.05$).

doi:10.1371/journal.pone.0036647.g003

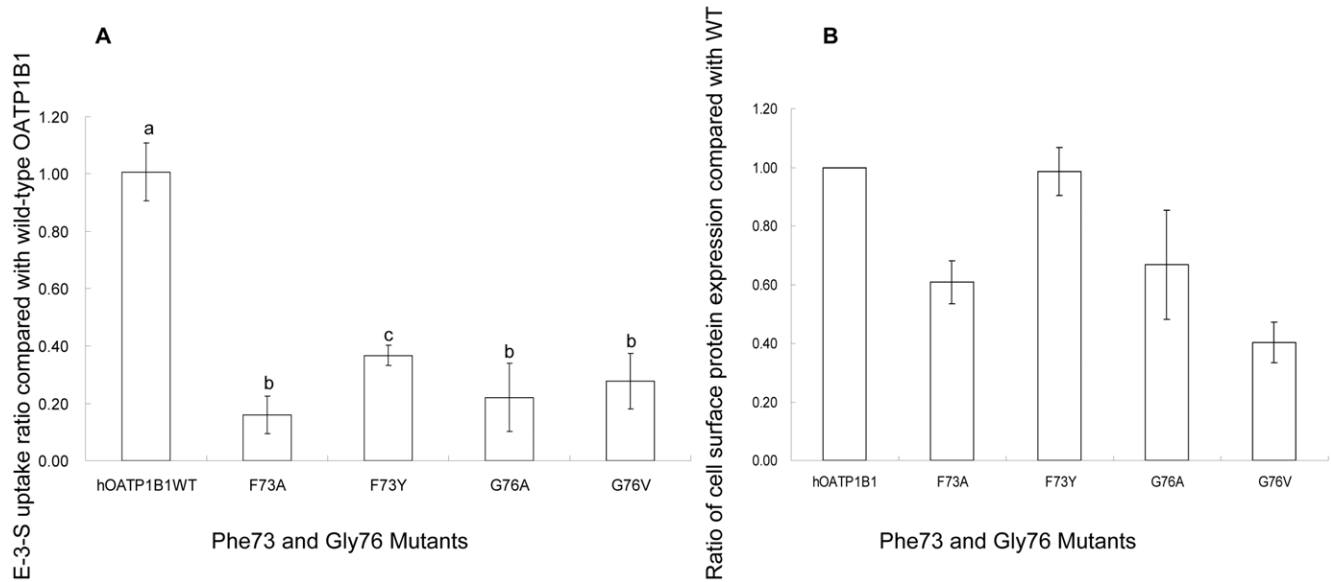


Figure 4. Effects of mutagenesis on Phe73 and Gly76. **A.** E-3-S uptake of Phe73 and Gly76 mutants. Uptake of 100 nM E-3-S was measured in OATP1B1 wild-type and F73A, F73Y as well as in G76A and G76V. Net uptake was obtained by subtracting the uptake of cells transfected with empty vector from cells expressing wild-type OATP1B1 or its mutants. Uptake of mutants was normalized to transporter expression at the cell surface in the same batch of cells and quantified relative to that of the wild-type. **B.** Cell surface expression of Phe73 and Gly76 mutants. The results shown are means \pm S.E. ($n=3$). Different letters indicate values that are significantly different ($p<0.05$). doi:10.1371/journal.pone.0036647.g004

Cell culture and transfection of plasmid constructs into cells

HEK293 cells were purchased from ATCC (Manassas, VA) and grown at 37°C and 5% CO₂ in Dulbecco's modified Eagle's medium (Invitrogen, Carlsbad, CA) supplemented with 10% fetal bovine serum. Confluent cells in 48-well or 6-well plate were transfected with DNA plasmid using LipofectAMINE 2000 reagent (Invitrogen) following the manufacturer's instructions. Transfected cells were incubated for 48 hrs at 37°C and then used for transport assay and cell surface biotinylation.

Uptake assay

Cells in a 48-well plate were used for transport measurement. To each well, uptake solution (125 mM NaCl, 4.8 mM KCl, 5.6 mM D-glucose, 1.2 mM KH₂PO₄, 25 mM HEPES, 1.2 mM CaCl₂, and 1.2 mM MgCl₂, pH7.4, and [³H]E-3-S) was added and the uptake was stopped at 10 min by addition of ice-cold phosphate-buffered saline (PBS) solution. The uptake solution was then aspirated off and the well was rapidly washed with ice-cold PBS solution for three times. The cells were then solubilized in 0.2 N NaOH, neutralized in 0.2 N HCl, and the radioactivity of the cell lysate was measured with a liquid scintillation counter Triathler-Hidex (Hidex, Finland). The uptake count was standardized by the amount of protein in each well.

Cell surface biotinylation and Western blot

Cell surface expression levels of OATP1B1 and its mutants were examined using the membrane-impermeable biotinylation reagent NHS-SS-biotin. Forty-eight hours after transfection, HEK293 cells in 6-well plates were first washed twice with ice-cold PBS (pH 8.0) and then incubated with 1 ml of NHS-SS-biotin (0.5 mg/ml in PBS) in two successive 20-minute incubations on ice with gentle shaking. The biotinylation process was terminated with 100 mM glycine by incubation on ice for 20 min. The cells were then dissolved on ice for 1 h in 400 μ l of RIPA buffer (50 mM Tris,

150 mM NaCl, 0.1% SDS, 1% NP-40, protease inhibitors phenylmethylsulfonyl fluoride, 200 μ g/ml, leupeptin, 3 μ g/ml, pH 7.4). The cell debris was removed by centrifugation at 12,000 \times g for 20 min at 4°C. Supernatants were transferred to new Eppendorf tubes and protein concentration was measured. To equal amount of protein of each sample, 50 μ l of streptavidin-agarose beads were added to bind the biotin-labeled cell membrane proteins. The streptavidin-agarose beads bound protein was released in 4 \times Laemmli buffer and protein was loaded onto a 7.5% SDS-polyacrylamide electrophoresis gel, then transferred electrophoretically to a polyvinylidene difluoride membrane (Millipore, Billerica, MA). OATP1B1 was detected with an anti-HA antibody (Cell Signaling Technology, Danvers, MA).

Statistical analysis

Data statistical analysis was carried out using Student's *t*-test. Differences between means are regarded as significant if $p\leq 0.05$.

Results

Alanine-scanning of TM2 amino acids

In order to identify the amino acids that are essential for proper transport functions of human OATP1B1, we generated mutants along the predicted TM2 of the protein. The amino acids along TM2 were selected according to Kyte-Doolittle hydrophobicity scale. Therefore, 21 amino acids from position 68 to 88 of OATP1B1 were individually mutated into alanine. The transport activity of the mutants was analyzed using 100 nM of E-3-S as the substrate. As shown in Fig. 1, most of the mutants retained transport function of the substrate and showed significant uptake compared with the mock control ($p<0.05$). However, four mutants, namely Asp70Ala (D70A), Phe73Ala (F73A), Glu74Ala (E74A) and Gly76Ala (G76A), all of which are located on the extracellular half of the transmembrane domain, were found to have significant loss of E-3-S uptake activity. Consequently, further studies were carried out for these four amino acids.

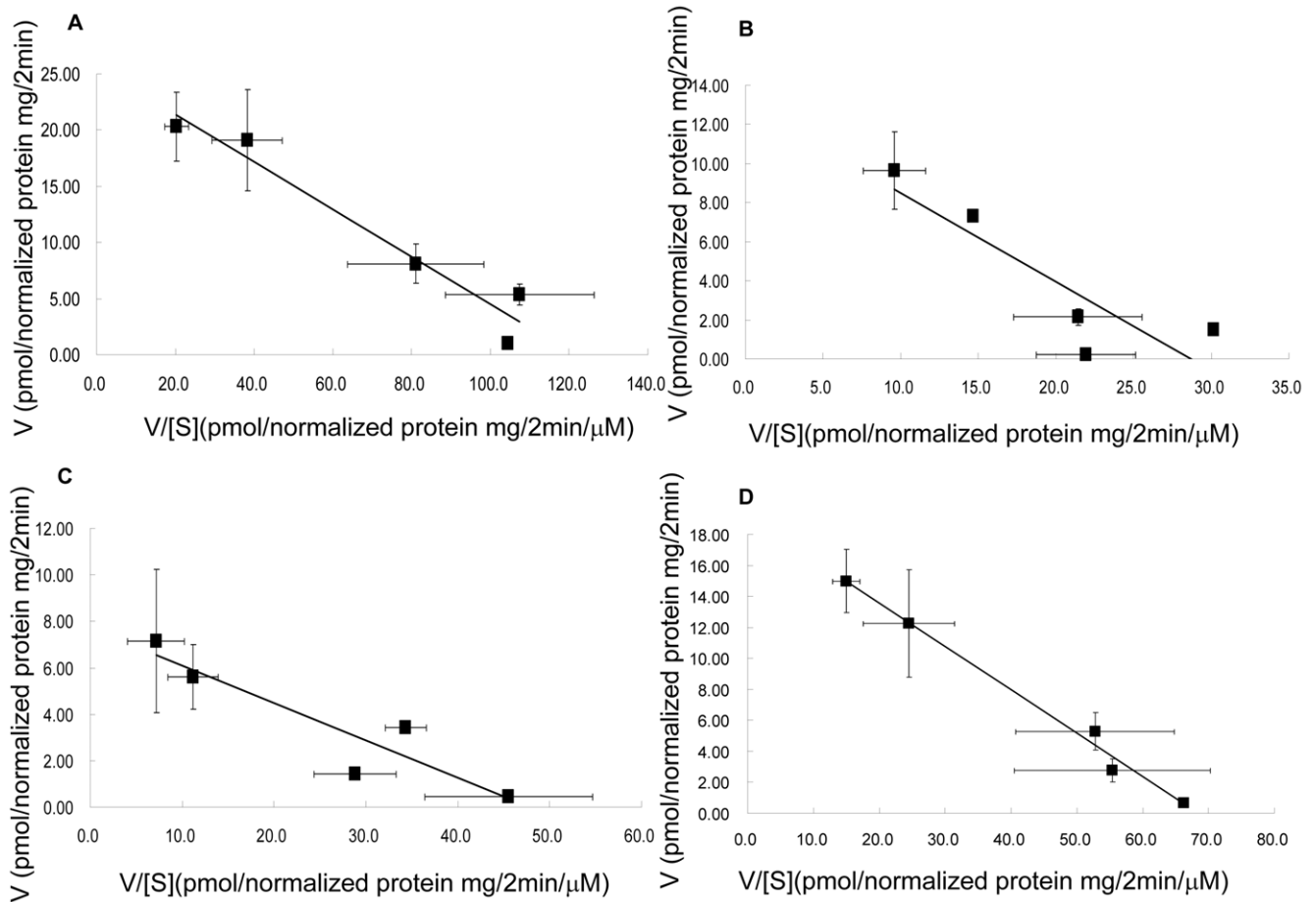


Figure 5. Eadie-Hofstee plots of low concentrations of estrone-3-sulfate uptake by OATP1B1 and its mutants. **A.** Uptake of OATP1B1, **B.** D70N, **C.** F73Y and **D.** E74D. Uptake of E-3-S was measured at concentrations range from 0.01 to 1 μ M. Uptake was conducted at 37°C for 2 min with empty vector, OATP1B1 or its mutants in HEK293 cells. Net uptake was obtained by subtracting the uptake of cells transfected with empty vector from cells expressing wild-type OATP1B1 or its mutants. Uptake of mutants was normalized to transporter expression at the cell surface in the same batch of cells and quantified relative to that of the wild-type. The results shown are means \pm S.E. ($n=3$). doi:10.1371/journal.pone.0036647.g005

Protein expression of mutants with reduced transport activity

Since OATP1B1 is a transporter protein that functions on the cell surface membrane, we first investigated whether the loss of transport function was due to reduced surface expression of the mutant proteins. Cell surface biotinylation was performed using a

cell-impermeable reagent NHS-SS-biotin. Our results showed that all four mutants were abundantly ($\sim 60\%$) expressed on the cell surface (Fig. 2A). We also analyzed total protein expression of these mutants. As indicated in Fig. 2B, D70A, F73A, and E74A had protein expression similar with that of the wild-type, while total protein expression of G76A correlated well with its cell surface expression. This suggested that alternation of Asp70, Phe73, and Glu74 into alanine may have a minor effect on protein expression on the cell surface membrane. However, such a reduction could not account for the significant loss of transport function for these three mutants.

Table 1. Kinetic parameters of OATP1B1 wild-type and its mutants for low concentrations of E-3-S.

	K _m (μ M)	V _{max} (pmol/mg protein/2 min)
OATP1B1	0.21 \pm 0.02	25.6 \pm 4.6
D70N	0.46* \pm 0.05	13.1* \pm 3.0
F73Y	0.16 \pm 0.11	7.7* \pm 3.3
E74D	0.28 \pm 0.03	19.2 \pm 4.0

Uptake of E-3-S was measured at concentrations of 10 nM, 50 nM, 100 nM, 500 nM and 1 μ M at a 2-min interval for OATP1B1 and its mutants. Transport kinetic values were calculated using the Eadie-Hofstee transformation. The results shown are means \pm S.E. ($n=3$). Asterisks indicate values significantly different ($p<0.05$) from that of OATP1B1 wild-type. doi:10.1371/journal.pone.0036647.t001

Effect of mutations of negatively charged Asp70 and Glu74 on hOATP1B1 transport activity

Among the four critical amino acids identified, Asp70 and Glu74 are two negatively charged amino acids. We then postulated that the charged property of these two amino acids may play a role in proper function of OATP1B1. When Asp70 was mutated into glutamic acid or Glu74 into aspartic acid, there was a significant increase of the uptake activity in comparison with the D70A and E74A mutants. D70E and E74D both showed more than 50% net uptake compared with that of the wild-type OATP1B1 (Fig. 3A, B). We also substituted Asp70 with

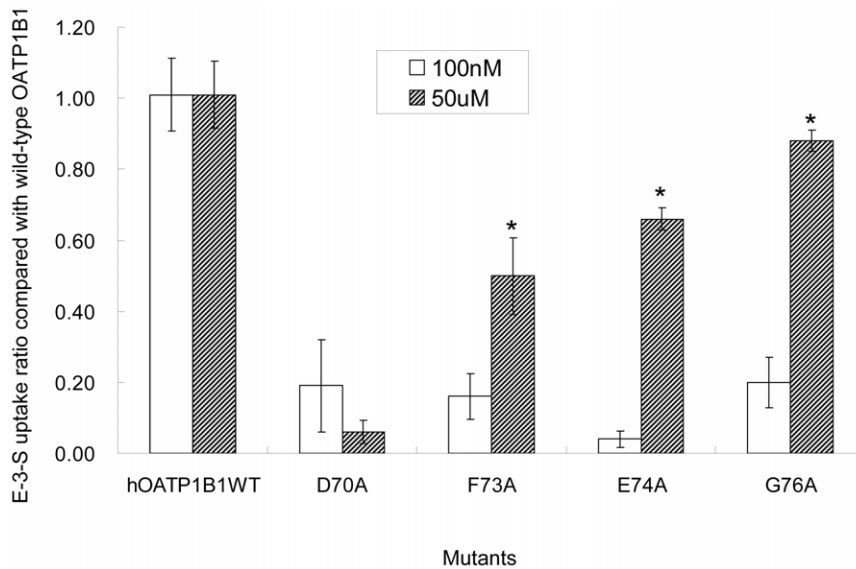


Figure 6. Effect of alanine substitution on uptake of high concentration of estrone-3-sulfate. Transport of 100 nM or 50 μ M E-3-S in HEK293 cells expressing OATP1B1 or its alanine-substituted mutants was measured. Net uptake was obtained by subtracting the uptake of cells transfected with empty vector from cells expressing wild-type OATP1B1 or its mutants. Uptake of mutants was normalized to transporter expression at the cell surface in the same batch of cells and quantified relative to that of the wild-type. The results shown are means \pm S.E. ($n=3$). Asterisks indicate values that are significantly different ($p<0.05$). doi:10.1371/journal.pone.0036647.g006

asparagine, the amino acid with similar structure but non-charged. Although transport activity was elevated, it was to a lesser extent compared with the glutamic acid substitution (Fig. 3A). On the other hand, transport activity of the E74Q mutant was still lacking, similar with that of the E74A substitution (Fig. 3B). The additional mutagenesis of Asp70 and Glu74 resulted in increased protein expression on the plasma membrane (Fig. 3C, D) and the uptake of wild-type OATP1B1 and mutants was therefore adjusted with their cell surface protein expression.

Effect of mutations of Phe73 and Gly76 on hOATP1B1 function

To further elucidate the molecular mechanism underlying the effect of Phe73 on OATP1B1 transport activity, we mutated this amino acid into tyrosine, another amino acid that contains an aromatic ring and has a similar structure to phenylalanine. Such a mutation resulted in an increase in transport activity that was around 40% of OATP1B1 (Fig. 4A). Cell surface expression of F73Y, on the other hand, was comparable with that of the wild-type (Fig. 4B). Glycine is the amino acid with the smallest side chain. Since the mutation of glycine 76 into alanine, which contains a methyl group as its side group, significantly reduced the transport activity of E-3-S, we further mutated glycine into valine, which has an even larger hydrophobic side chain, to investigate whether the side group size is important for OATP1B1 function. Interestingly, such a substitution did not seem to cause any significant change in the uptake activity (Fig. 4A) or the protein expression on the plasma membrane (Fig. 4B).

Kinetic analysis of mutants with reduced transport function

Uptake activity of D70A, F73A, E74A, and G76A were all too low for kinetic analysis. Therefore, we analyzed the kinetic properties of D70N, F73Y, and E74D instead (Fig. 5). As shown in Table 1, D70N had a much larger K_m (more than twofold increase) and a lower V_{max} compared to that of wild-type

OATP1B1. On the other hand, E74D had a similar K_m as well as V_{max} in comparison with that of the wild-type. The K_m for F73Y is slightly lower than the wild-type. Interestingly, though F73Y had a similar cell surface expression as that of wild-type OATP1B1 (Fig. 4B), its V_{max} is only around 30% compared to the wild-type.

Uptake activity of mutants for higher concentration of estrone-3-sulfate

It has been proposed that OATP1B1 has more than one binding site and that its transport of E-3-S displayed biphasic saturation kinetics with two distinct affinity components [10,15,20]. In order to see whether the substitution of these four amino acids also has effect on the transport function of higher concentrations of E-3-S, we measured uptake activity of the alanine mutants for 50 μ M of E-3-S. As shown in Figure 6, net transport activity of all mutants had a significantly higher transport function except D70A. This implicated that Asp70 is involved in both low and high affinity interaction sites of E-3-S, while other amino acids identified may have more impact on the high affinity component of E-3-S. We further analyzed the kinetic parameters of these mutants for high concentrations ($>5 \mu$ M) of E-3-S. As shown in Fig. 7 and Table 2, D70N, which was used to measure the kinetic parameters instead of D70A, of which uptake was too low for the analysis, demonstrated a significant increase of K_m . For all the other mutants, K_m and V_{max} were comparable with those of the wild-type OATP1B1.

Discussion

Although the vital importance of OATPs in body drug disposition is indisputable [21], our knowledge on the structure-function relationship of OATPs is still limited. As a critical structural feature of membrane proteins, amino acids within TMs have been shown to play important roles in proper functions of these proteins [13–16,19]. In the present study, we demonstrated the mutation of four amino acids (Asp70, Phe73, Glu74 and

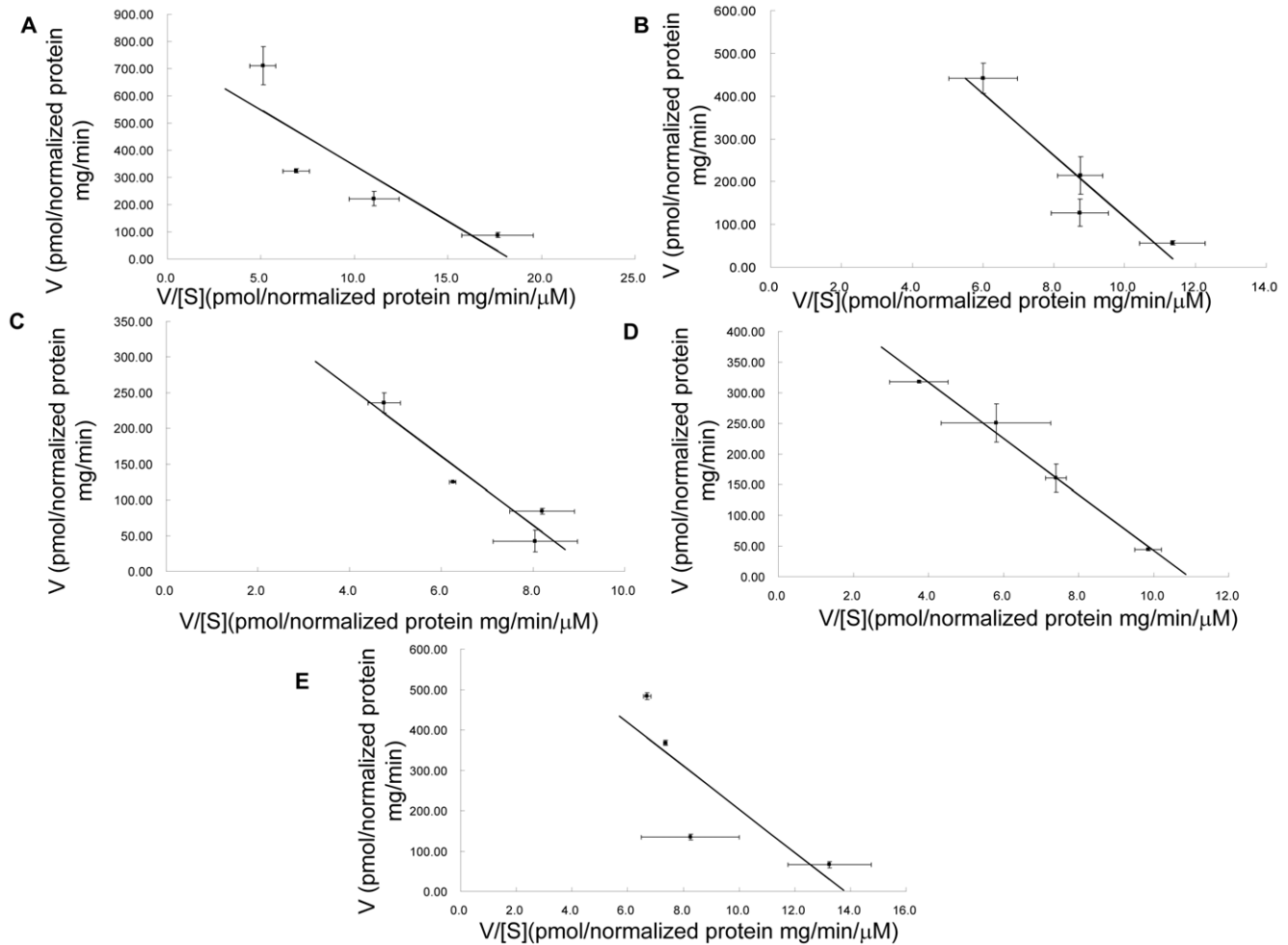


Figure 7. Eadie-Hofstee plots of high concentrations of estrone-3-sulfate uptake by OATP1B1 and its mutants. A. Uptake of OATP1B1, **B.** D70N, **C.** F73A, **D.** E74A and **E.** G76A. Uptake of E-3-S was measured at concentrations range from 5 to 100 μ M. Uptake was conducted at 37°C for 1 min with empty vector, OATP1B1 or its mutants in HEK293 cells. Net uptake was obtained by subtracting the uptake of cells transfected with empty vector from cells expressing wild-type OATP1B1 or its mutants. Uptake of mutants was normalized to transporter expression at the cell surface in the same batch of cells and quantified relative to that of the wild-type. The results shown are means \pm S.E. ($n=3$). doi:10.1371/journal.pone.0036647.g007

Gly76) within TM2 of OATP1B1 into alanine led to a significant reduction in the transport of E-3-S. Cell surface expression of these four mutants was also decreased compared with that of the wild-

type (~60%), suggesting that the substitution of these amino acids into alanine may partially affect the proper targeting of the transporter protein onto the membrane. However, the decline in transport function was much more dramatic and thus could not be totally accounted for by the reduction of cell surface protein level.

Both Asp70 and Glu74 are negatively charged amino acids. However, they seemed to affect transporter function in different ways. Although mutation of Asp70 into alanine significantly reduced transport activity (Fig. 1), substitution of the amino acid into glutamic acid or non-charged asparagine partially recovered the transport activity of E-3-S and also resulted in increased cell surface expression of the protein. Kinetic study on D70N showed an increased K_m value as well as a decreased V_{max} , suggesting Asp70 is involved in the interaction with substrate and that its side chain characteristics are crucial for the binding of E-3-S. On the other hand, when Glu74 was converted into aspartic acid, the mutant showed a significant uptake activity (~50% of wild-type). Moreover, both K_m and V_{max} of E74D was similar with that of OATP1B1. That the charge characteristic of Glu74 is essential for OATP1B1 activity was further proved by the consequences of substituting this amino acid with glutamine, an amino acid that

Table 2. Kinetic parameters of OATP1B1 wild-type and its mutants for high concentrations of E-3-S.

	K_m (μ M)	V_{max} (pmol/mg protein/min)
OATP1B1	42.18 \pm 10.71	766.92 \pm 132.03
D70N	71.82* \pm 4.76	785.59 \pm 205.18
F73A	44.35 \pm 7.54	424.17 \pm 49.33
E74A	51.04 \pm 17.42	531.68 \pm 117.54
G76A	51.68 \pm 1.34	721.94 \pm 36.73

Uptake of E-3-S was measured at concentrations of 5 μ M, 20 μ M, 50 μ M and 100 μ M at a 1-min interval for OATP1B1 and its mutants. Transport kinetic values were calculated using the Eadie-Hofstee transformation. The results shown are means \pm S.E. ($n=3$). Asterisks indicate values significantly different ($p<0.05$) from that of OATP1B1 wild-type. doi:10.1371/journal.pone.0036647.t002

```

50              68              88              126
OATP1B1  SSIHHIERRFEISSSLVGFIDGSFEIGNLLVIVFVSYPFGSKLHRPKLIGIGCFIMGIGVLTALPHFFMGYYRYSKE
OATP1B3  ISITQIERRFDISSLAGLIDGSFEIGNLLVIVFVSYPFGSKLHRPKLIGIGCLLMGTGSLTSLPHFFMGYYRYSKE
OATP1C1  STITQIERRFDIPSSLVGVIDGSFEIGNLLVITFVSYPFGAKLHRPKIIGAGCVIMGVGTLLIAMPQFFMEQYKYERY
OATP1A2  SMLTQIERQFNIPSTLVGFINGSFIEGNLLLIIFVSYPFGTKLHRPIMIGIGCVVMGLGCFLKSLPHFLMNQYQYEST
OATP2A1  SSLTTIEKRFLSSSSSGLISSLNEISNAILIIFVSYPGSRVHRPRLIGIGGLFLAAGAFILTLPHFLSEPYQYTLA
OATP2B1  SSISTVEKRFGLSSQTSGLLASFNEVGNTALIVFVSYPGSRVHRPRMIGYGAALVALAGLLMTLPHFISEPYRYDNT
OATP4C1  ISISTVEKRYEMKSSLTGLISSYDISFCLLSLVSFFGERGHKPRWLAFAAFMIGLALVFSLPQFFSGEYKLGSL
OATP6A1  VSIGDFQKEYQLKTIKLALEKSYDISGLVAIFIAFYGDR-KKVIWFWASSFLIGLGSLLCAFPSINE-----E
OATP4A1  TVITSLERRYDLHSYQSGLIASSYDIAACLCLTFVSYPFGSGHKKPRWLGWGVLLMGTGSLVFPALPHFTAGRYEVELD
OATP3A1  SVLTTLERRFNLSADVGVIASSFEIGNLALILFVSYPGARGHRPRLIGCGGIVMALGALLSALPEFLTHQYKYEAG
OATP5A1  SVITTIERRYSLKSSSEGLLVSCFDIGNLVVVVVSYPFGRRRPLWLAVGGLLAFGAALFALPHFISPPYQIQEL
      :  . . . . : : :  :  :  :  * : : : *  : :  :  . . . . .  : : * :

```

Figure 8. Comparison of TM2 sequences within OATP family. Full length sequences of 11 OATP family members were aligned with ClustalW. Only partial sequences were shown here. The corresponding sequences of TM2 were in bold. doi:10.1371/journal.pone.0036647.g008

has similar structure but is non-charged. The substitution of Glu74 with glutamine still resulted in loss of transport activity (Fig. 3B), though cell surface expression level of E74Q was comparable with that of wild-type. Charged amino acids located within the transmembrane domain have been suggested to be critical for transport function, possibly through the formation of a salt bridge with a nearby oppositely charged amino acid [22]. Our results thus suggested that Glu74 may interact with positively charged amino acids located in the C-terminal half of the transporter protein and form a salt bridge to stabilize the binding pocket.

F73 is a relatively conserved amino acid within the OATP family. The line-up of all 11 human OATP members showed that 6 out of the 11 OATPs have a phenylalanine at the corresponding position, while 3 others have a tyrosine at this site (Fig. 8). We then postulated that the aromatic ring may be a critical factor in substrate binding and substituted Phe73 with tyrosine. The net transport function of F73Y with substrate E-3-S was around 40% of wild-type. Moreover, kinetic study showed that the K_m of F73Y is similar to that of the wild-type, which indicates the important role of the aromatic structure in its interaction with the substrate, possibly through a π - π interaction. However, the V_{max} of F73Y was much lower than wild-type OATP1B1, suggesting a lower turnover rate for the mutant. Interestingly, F83 and F87 are more conserved than position 73, with all 11 or 10 out of 11 OATP members containing the same aromatic amino acid. However,

substitution of these two positions with alanine did not seem to affect transport function of OATP1B1 significantly (Fig. 1). Gly76 is also a relatively conserved amino acid in the OATP family, with 7 out of 11 family members containing the same residue. We first postulated that Gly76 may be located within the transporting channel based on the homology modeling of OATP1B1 using glycerol-3-phosphate 1pw4 as the template (Fig. 9), of which Phe73 and Glu74 were implicated to face towards the pore. Considering the structure of an α -helix, in which amino acids spaced 3 and 4 apart in the sequence are spatially quite close to one another, Gly76 may be located in proximity to Phe73 and Glu74 and interact with the substrates. However, the substitution of glycine with valine, a residue with larger side chain than alanine, did not seem to result in more change of the transport activity. Conserved glycine residues are thought to result in breaks and bends in the TM helices [22]. The breaks and bends that are generated by glycine residues were suggested to cause the major part of the corresponding transmembrane helix to face the pore [23] and this is probably the case for Gly76. When it was mutated into alanine or valine, the curved nature of the helix changed and the part that is originally facing the pore may be turned away, thus resulting in the loss of transport activity.

OATP1B1 was proposed to contain more than one binding sites [20] and that its transport of E-3-S displayed biphasic saturation kinetics with two distinct affinity components [10,15,20]. To

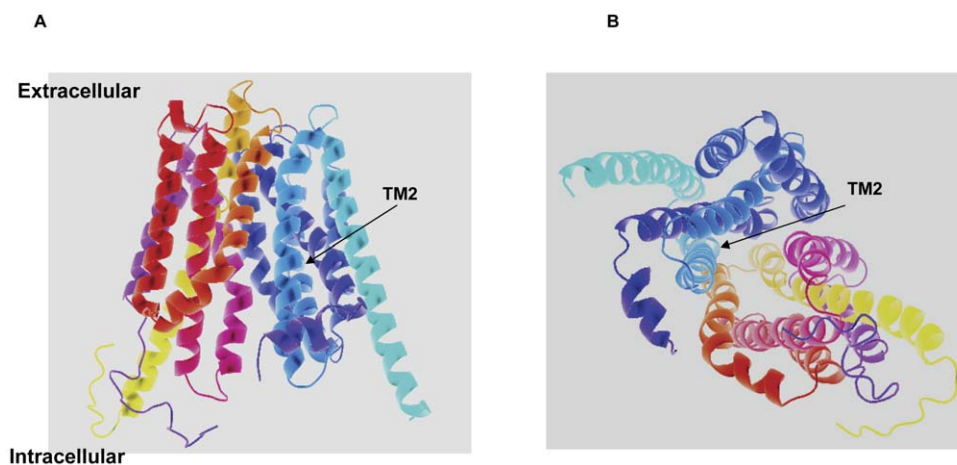


Figure 9. Putative computer model of OATP1B1. Viewed from **A**, the lateral side. **B**, the intracellular side. The glycerol-3-phosphate transporter (PDB 1pw4) was used as the template for homology modeling of OATP1B1. The structure of OATP1B1 was modeled with the web-based protein structure prediction service Phyre2 (<http://www.imperial.ac.uk/phyre/>). Arrows indicate that TM2 is located on the pore-facing side. doi:10.1371/journal.pone.0036647.g009

further analyze if the mutation of these four identified amino acids also has effect on uptake of high-concentration of E-3-S, we measured the transport activity of all four alanine mutants for 50 μ M of E-3-S. Interestingly, except D70A, transport function of all the other mutants was significantly increased. This indicated that Phe73, Glu74 and Gly76 may be only critically involved in one binding site of OATP1B1, while Asp70 play a role in substrate binding of both sites. Our kinetic analysis seemed to support such a hypothesis because the Asp70 substitution mutant D70N showed a significantly higher K_m value.

According to our computer model of OATP1B1 (Fig. 9), TM2 is facing the pore in which the interaction with substrates occurs. This is consistent with our mutagenesis study that identified four important amino acids in TM2 for the uptake of low concentrations of E-3-S. Asp70, Phe73, and Glu74 are probably localized on the pore-facing side of the transporter protein and involved in substrate binding or structure stabilizing. Gly76 on the other hand, may not directly interact with the substrate, but generates a break or bend that leads to the proper turning of the helix. That the uptake of higher concentrations of E-3-S was still lacking in mutant D70A suggested that this particular amino acid may be

involved in both the low and high affinity component of E-3-S, while all the other three identified amino acids play roles in only one site. A recent study on conserved positively charged amino acids in OATP1B1 demonstrated that amino acids K90, H92 and R93 that are immediately adjacent to the TM2 had an impact on the functional properties of OATP1B1. Although these amino acids are located intracellularly and away from the critical amino acids identified in our study, which localized on the extracellular half of TM2, their conservativeness and involvement of transport activity seem to support our findings that TM2 of OATP1B1 is essential for its transport function [24].

Acknowledgments

We thank Dr. Kevin Lee for critical reading of the manuscript.

Author Contributions

Conceived and designed the experiments: MH. Performed the experiments: NL WFH GYL. Analyzed the data: MH HH. Contributed reagents/materials/analysis tools: HPL. Wrote the paper: MH.

References

- Hagenbuch B, Gui C (2008) Xenobiotic transporters of the human organic anion transporting polypeptides (OATP) family. *Xenobiotica* 38: 778–801.
- Noé B, Hagenbuch B, Stieger B, Meier PJ (1997) Isolation of a multi-specific organic anion and cardiac glycoside transporter from rat brain. *Proc Natl Acad Sci USA* 94: 10346–10350.
- Bossuyt X, Müller M, Meier PJ (1996) Multispecific amphipathic substrate transport by an organic anion transporter of human liver. *J Hepatol* 25: 733–738.
- Shitara Y, Sato H, Sugiyama Y (2005) Evaluation of drug-drug interaction in the hepatobiliary and renal transport of drugs. *Annu Rev Pharmacol Toxicol* 45: 689–723.
- Poirier A, Funk C, Lavé T, Noé J (2007) New strategies to address drug-drug interactions involving OATPs. *Curr Opin Drug Discov Dev* 10: 74–83.
- Kullak-Ublick GA, Hagenbuch B, Stieger B, Schteingart CD, Hofmann AF, et al. (1995) Molecular and functional characterization of an organic anion transporting polypeptide cloned from human liver. *Gastroenterology* 109: 1274–1282.
- Hagenbuch B, Meier PJ (2003) The superfamily of organic anion transporting polypeptides. *Biochim Biophys Acta* 1609: 1–18.
- Mikkaichi T, Suzuki T, Tanemoto M, Ito S, Abe T (2004) The organic anion transporter (OATP) family. *Drug Metab Pharmacokinet* 19: 171–179.
- König J, Scithel A, Gradhand U, Fromm MF (2006) Pharmacogenomics of human OATP transporters. *Naunyn Schmiedebergs Arch Pharmacol* 372: 432–443.
- Noé J, Portmann R, Brun ME, Funk C (2007) Substrate-Dependent Drug-Drug Interactions between Gemfibrozil, Fluvastatin and Other Organic Anion-Transporting Peptide (OATP) Substrates on OATP1B1, OATP2B1, and OATP1B3. *Drug Metab Dispos* 35: 1308–1314.
- van Montfoort JE, Hagenbuch B, Groothuis GM, Koepsell H, Meier PJ, et al. (2003) Drug uptake systems in liver and kidney. *Curr Drug Metab* 4: 185–211.
- Miyagawa M, Maeda K, Aoyama A, Sugiyama Y (2009) The eighth and ninth transmembrane domains in organic anion transporting polypeptide 1B1 affect the transport kinetics of estrone-3-sulfate and estradiol-17 β -D-glucuronide. *J Pharmacol Exp Ther* 329: 551–557.
- Hong M, Li S, Zhou F, Thomas PE, You G (2010) Putative Transmembrane Domain 12 of the Human Organic Anion Transporter hOAT1 Determines Transporter Stability and Maturation Efficiency. *J Pharm Expt Thera* 332: 650–658.
- Hong M, Zhou F, Lee K, You G (2007) The putative transmembrane segment 7 of human organic anion transporter hOAT1 dictates transporter substrate binding and stability. *J. Pharmacol. Exp. Ther.* 320: 1209–1215.
- Gui C, Hagenbuch B (2009) Role of transmembrane domain 10 for the function of organic anion transporting polypeptide 1B1. *Protein Sci* 18: 2298–2306.
- Glaeser H, Mandery K, Sticht H, Fromm MF, König J (2010) Relevance of conserved lysine and arginine residues in transmembrane helices for the transport activity of organic anion transporting polypeptide 1B3. *Br J Pharmacol* 159: 698–708.
- Cai SY, Wang W, Soroka CJ, Ballatori N, Boyer JL (2002) An evolutionarily ancient Oatp: insights into conserved functional domains of these proteins. *Am J Physiol Gastrointest Liver Physiol* 282: G702–710.
- Kalliokoski A, Niemi M (2009) Impact of OATP transporters on pharmacokinetics. *Bri J Pharm* 158: 693–705.
- Tirona RG, Leake BF, Merino G, Kim RB (2001) Polymorphisms in OATP-C: identification of multiple allelic variants associated with altered transport activity among European- and African-Americans. *J Biol Chem* 276: 35669–35675.
- Tamai I, Nozawa T, Koshida M, Nezu J, Sai Y, et al. (2001) Functional characterization of human organic anion transporting polypeptide B (OATP-B) in comparison with liver-specific OATP-C. *Pharm Res* 18: 1262–69.
- König J (2011) Uptake transporters of the human OATP family: molecular characteristics, substrates, their role in drug-drug interactions, and functional consequences of polymorphisms. *Handb Exp Pharmacol* 201: 1–28.
- Rizwan AN, Krick W, Burckhardt G (2007) The chloride dependence of the human organic anion transporter 1 (hOAT1) is blunted by mutation of a single amino acid. *J Biol Chem* 282: 13402–13409.
- Meier-Abt F, Mokrab Y, Mizuguchi K (2005) Organic anion transporting polypeptides of the OATP/SLCO superfamily: identification of new members in nonmammalian species, comparative modeling and a potential transport mode. *J Membr Biol* 208: 213–27.
- Weaver YM, Hagenbuch B (2010) Several conserved positively charged amino acids in OATP1B1 are involved in binding or translocation of different substrates. *J Membr Biol* 236: 279–90.